

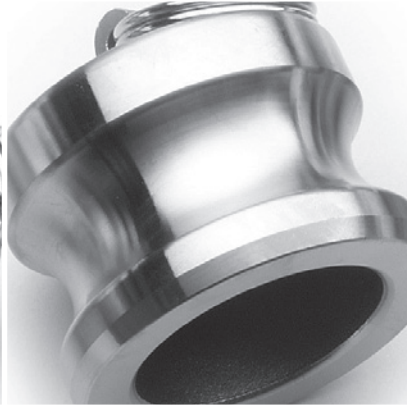
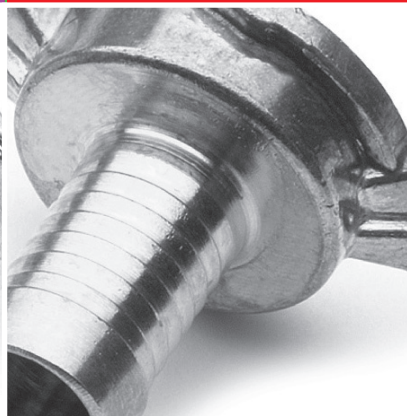
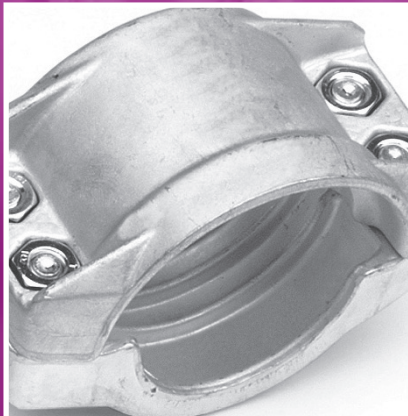


Поставщик промышленных комплектующих №1



listino prezzi

RACCORDI
price list COUPLINGS



marzo 2008



ivg colbachini spa





linea CARBURANTI



FUEL line

Carburanti DIN 2817 29
Fuel DIN 2817

Carburanti TW 30
Fuel TW

Carburanti tipo italiano 31
Fuel Italian type

COLLARI a bullone

CLAMPS with bolt

Collari a doppio bullone AK/BI Blok 36
Clamps with double bolt AK/BI Blok

Collari a bullone AK/PC Inox 36
Clamps with bolt AK/PC

Collari a bullone AK/AC 37
Clamps with bolt AK/AC

Fascetta tipo AK KC 9 mm 37
Band type AK KC 9 mm

linea VAPORE



STEAM line

Vapore - Steam 32

FASCETTE

BAND TYPE

Fascetta tipo AK KCX 9 mm 38
Band type AK KCX 9 mm

linea FOOD



FOOD line

Raccordi DIN 11851 33
Couplings DIN 11851

Raccordi CLAMP 34
Couplings CLAMP

Raccordi Garolla 35
Couplings Garolla

ACCESSORI

ACCESSORIES

Nastro per serraggio 39
Band for tightening

Utensile per serraggio 39
Tightening tool

Buckles per serraggio 39
Buckles for tightening





express

Semiraccordo con portagomma e collarino

OTTONE

Fitting with insert and collar

BRASS



| Cod. Code | Ø nominale nominal Ø | | €/cad. €/each | Disp. Avail. | M | - |
|-----------|----------------------|------|---------------|--------------|---|---|
| | mm | inch | | | | |
| 3000001 | 13 | 1/2 | 3,32 | M | - | |
| 3000002 | 16 | 5/8 | 3,72 | M | - | |
| 3000003 | 19 | 3/4 | 3,90 | M | - | |
| 3000004 | 25 | 1 | 4,18 | M | - | |

tubi consigliati recommended hose

Mandrino: Montreal
Mandrel hose Nairobi - Montana

Long Length: Air-Water
Long Length hose Multiform Yellow Multiform Blue

Green Line: Green Line
Green line hose

Semiraccordo filettato femmina BSP

OTTONE

Fitting female BSP thread

BRASS



| | | | | | | |
|---------|----|-----|------|---|---|--|
| 3000005 | 6 | 1/4 | 2,92 | M | - | |
| 3000006 | 10 | 3/8 | 2,94 | M | - | |
| 3000007 | 13 | 1/2 | 3,02 | M | - | |
| 3000008 | 19 | 3/4 | 3,18 | M | - | |
| 3000009 | 25 | 1 | 3,54 | M | - | |

Semiraccordo filettato maschio BSP

OTTONE

Fitting male BSP thread

BRASS



| | | | | | | |
|---------|----|-----|------|---|---|--|
| 3000010 | 6 | 1/4 | 2,94 | M | - | |
| 3000011 | 10 | 3/8 | 2,94 | M | - | |
| 3000012 | 13 | 1/2 | 2,96 | M | - | |
| 3000013 | 19 | 3/4 | 3,12 | M | - | |
| 3000014 | 25 | 1 | 3,62 | M | - | |

Tappo per tutte le dimensioni

OTTONE

Cup for all sizes

BRASS



| | | | | | | |
|---------|---|---|------|---|---|--|
| 3000015 | - | - | 2,92 | M | - | |
|---------|---|---|------|---|---|--|

Guarnizione in gomma

Rubber gasket



| | | | | | | |
|---------|---|---|------|---|-----|--|
| 2200740 | - | - | 0,29 | M | 100 | |
|---------|---|---|------|---|-----|--|



giroexp/F

Raccordo filettato BSP

ACCIAIO AL CARBONIO

Coupling BSP thread

STEEL



| Cod. Code | Ø nominale nominal Ø | | €/cad. €/each | Disp. Avail. | M | - |
|-----------|----------------------|-------|---------------|--------------|---|---|
| | mm | inch | | | | |
| 3000037 | 25 | 1 | 12,64 | M | - | |
| 3000038 | 32 | 1-1/4 | 21,84 | M | - | |
| 3000039 | 38 | 1-1/2 | 22,56 | M | - | |
| 3000040 | 50 | 2 | 28,26 | M | - | |

tubi consigliati
recommended hose

Mandrino: Montana
Mandrel hose Alaska
Montreal

Green Line: Green Line
Green line hose

Nipples a doppio rodaggio conico filettato BSP

ACCIAIO AL CARBONIO

Double wing nut BSP thread

STEEL



| | | | | | | |
|---------|----|-------|-------|---|---|--|
| 3000046 | 25 | 1 | 5,36 | M | - | |
| 3000047 | 32 | 1-1/4 | 9,62 | M | - | |
| 3000048 | 38 | 1-1/2 | 11,74 | M | - | |
| 3000049 | 50 | 2 | 14,74 | M | - | |

giroexp/S

Raccordo filettato BSP

ACCIAIO AL CARBONIO

Coupling BSP thread

STEEL



| Cod. Code | Ø nominale nominal Ø | | €/cad. €/each | Disp. Avail. | M | - |
|-----------|----------------------|-------|---------------|--------------|---|---|
| | mm | inch | | | | |
| 4225162 | 25 | 1 | 13,62 | M | - | |
| 2201089 | 32 | 1-1/4 | 24,66 | M | - | |
| 2201771 | 38 | 1-1/2 | 29,42 | M | - | |
| 2201267 | 50 | 2 | 41,74 | M | - | |

tubi consigliati
recommended hose

Mandrino: Montana
Mandrel hose Alaska
Montreal

Green Line: Green Line
Green line hose

Nipples a doppio rodaggio conico filettato BSP

ACCIAIO AL CARBONIO

Double wing nut BSP thread

STEEL



| | | | | | | |
|---------|----|-------|-------|---|---|--|
| 2201097 | 25 | 1 | 6,06 | M | - | |
| 2201100 | 32 | 1-1/4 | 13,32 | M | - | |
| 4703819 | 38 | 1-1/2 | 14,06 | M | - | |
| 2201119 | 50 | 2 | 21,46 | M | - | |

**bauer****Raccordo maschio con portagomma**

ACCIAIO AL CARBONIO

Male insert

STEEL



| Cod. Code | Ø nominale nominal Ø mm | €/cad. €/each | Disp. Avail. | |
|-----------|-------------------------|---------------|--------------|---|
| 3000053 | 50x50 | 17,12 | R | 5 |
| 3000054 | 76x63 | 26,30 | R | 5 |
| 3000055 | 76x76 | 26,36 | R | 5 |
| 3000056 | 89x76 | 35,48 | R | 5 |
| 3000057 | 108x100 | 44,04 | R | 5 |
| 3000058 | 133x125 | 61,50 | R | 5 |
| 3000059 | 159x150 | 78,30 | R | 5 |
| 3000060 | 194x200 | 152,98 | R | 5 |

tubi consigliati
*recommended hose*Mandrino: Amburgo
Mandrel hose Toronto
Oslo**Raccordo femmina con portagomma**

ACCIAIO AL CARBONIO

Female insert

STEEL



| | | | | |
|---------|---------|-------|---|---|
| 3000061 | 50x50 | 7,30 | R | 5 |
| 3000062 | 76x63 | 10,56 | R | 5 |
| 3000063 | 76x76 | 10,78 | R | 5 |
| 3000064 | 89x76 | 13,58 | R | 5 |
| 3000065 | 108x100 | 19,62 | R | 5 |
| 3000066 | 133x125 | 30,40 | R | 5 |
| 3000067 | 159x150 | 35,80 | R | 5 |
| 3000068 | 194x200 | 69,68 | R | 5 |

Guarnizione in gomma*Rubber gasket*

| | | | | |
|---------|-----|------|---|----|
| 3000069 | 50 | 0,40 | R | 20 |
| 3000070 | 76 | 1,06 | R | 20 |
| 3000071 | 89 | 1,68 | R | 20 |
| 3000072 | 108 | 1,78 | R | 20 |
| 3000073 | 133 | 3,32 | R | 20 |
| 3000074 | 159 | 3,54 | R | 20 |
| 3000581 | 194 | 8,10 | R | 20 |

simbologia listino *price list symbol***Disp.:** disponibilità**Avail.:** *availability***M:** magazzino *warehouse***R:** richiesto *request*quantità minima *minimum quantity*



cardan perrot

Raccordo maschio con portagomma

ACCIAIO AL CARBONIO

Male insert

STEEL



| Cod. Code | Ø nominale nominal Ø mm | €/cad. €/each | Disp. Avail. | | |
|-----------|-------------------------|---------------|--------------|---|--|
| 3000074 | 50x50 | 6,76 | R | 5 | |
| 3000075 | 70x63 | 17,04 | R | 5 | |
| 3000076 | 70x76 | 17,44 | R | 5 | |
| 3000077 | 89x76 | 16,18 | R | 5 | |
| 3000078 | 89x89 | 17,20 | R | 5 | |
| 3000079 | 108x100 | 23,12 | R | 5 | |
| 3000080 | 133x125 | 29,10 | R | 5 | |
| 3000081 | 159x150 | 38,56 | R | 5 | |

tubi consigliati
recommended hose

Mandrino: Amburgo
Mandrel hose Toronto
Oslo

Raccordo femmina con portagomma

ACCIAIO AL CARBONIO

Female insert

STEEL



| | | | | |
|---------|---------|-------|---|---|
| 3000082 | 50x50 | 21,06 | R | 5 |
| 3000083 | 70x63 | 32,64 | R | 5 |
| 3000084 | 70x76 | 34,84 | R | 5 |
| 3000085 | 89x76 | 38,64 | R | 5 |
| 3000086 | 89x89 | 42,50 | R | 5 |
| 3000087 | 108x100 | 55,94 | R | 5 |
| 3000088 | 133x125 | 76,84 | R | 5 |
| 3000089 | 159x150 | 94,72 | R | 5 |

Guarnizione in gomma

Rubber gasket



| | | | | |
|---------|-----|------|---|----|
| 3000090 | 50 | 0,56 | R | 20 |
| 3000091 | 70 | 0,68 | R | 20 |
| 3000092 | 89 | 1,10 | R | 20 |
| 3000093 | 108 | 2,26 | R | 5 |
| 3000094 | 133 | 3,64 | R | 5 |
| 3000095 | 159 | 4,02 | R | 5 |



gamma Anfor Anfor type

Raccordo maschio
con portagomma

ACCIAIO AL
CARBONIO

Male insert

STEEL



| Cod. Code | Ø nominale nominal Ø mm | €/cad. €/each | Disp. Avail. | Disp. Avail. | Disp. Avail. |
|-----------|-------------------------|---------------|--------------|--------------|--------------|
| 3000108 | 150 | 41,04 | R | 5 | |
| 3000109 | 200 | 84,26 | R | 5 | |
| 3000110 | 250 | 145,36 | R | 5 | |
| 3000111 | 300 | 223,12 | R | 5 | |

tubi consigliati
recommended hose

Mandrino: Amburgo
Mandrel hose Toronto
Oslo

Raccordo femmina
con portagomma

ACCIAIO AL
CARBONIO

Female insert

STEEL



| | | | | |
|---------|-----|--------|---|---|
| 3000112 | 150 | 41,52 | R | 5 |
| 3000113 | 200 | 89,58 | R | 5 |
| 3000114 | 250 | 141,40 | R | 5 |
| 3000115 | 300 | 253,58 | R | 5 |

Guarnizione
in gomma

Rubber gasket



| | | | | |
|---------|-----|------|---|----|
| 3000654 | 150 | 1,90 | R | 20 |
| 3000655 | 200 | 3,76 | R | 5 |
| 3000656 | 250 | 8,64 | R | 5 |
| 3000657 | 300 | 9,74 | R | 5 |

simbologia listino *price list symbol*

Disp.: disponibilità

Avail.: *availability*

M: magazzino *warehouse*

R: richiesto *request*

quantità minima *minimum quantity*





gamma italiana italiana type

Raccordo maschio con portagomma

ACCIAIO AL CARBONIO

Male insert

STEEL



| Cod. Code | Ø nominale nominal Ø mm | €/cad. €/each | Disp. Avail. | | |
|-----------|-------------------------|---------------|--------------|---|--|
| 3000096 | 50 | 7,20 | R | 5 | |
| 3000097 | 60 | 8,98 | R | 5 | |
| 3000098 | 80 | 11,56 | R | 5 | |
| 3000099 | 100 | 16,18 | R | 5 | |
| 3000100 | 120 | 19,96 | R | 5 | |
| 3000101 | 150 | 29,14 | R | 5 | |

tubi consigliati recommended hose

Mandrino: Amburgo
Mandrel hose Toronto
Oslo

Raccordo femmina con portagomma

ACCIAIO AL CARBONIO

Female insert

STEEL



| | | | | |
|---------|-----|-------|---|---|
| 3000102 | 50 | 10,56 | R | 5 |
| 3000103 | 60 | 10,90 | R | 5 |
| 3000104 | 80 | 14,22 | R | 5 |
| 3000105 | 100 | 17,52 | R | 5 |
| 3000106 | 120 | 22,36 | R | 5 |
| 3000107 | 150 | 30,66 | R | 5 |

Guarnizione in gomma

Rubber gasket



| | | | | |
|---------|-----|------|---|----|
| 3000649 | 50 | 0,46 | R | 20 |
| 3000650 | 60 | 0,46 | R | 20 |
| 3000651 | 80 | 0,68 | R | 20 |
| 3000652 | 100 | 0,76 | R | 20 |
| 3000653 | 120 | 1,36 | R | 20 |
| 3000654 | 150 | 1,84 | R | 20 |



geka

Semiraccordo con portagomma

OTTONE

Fitting insert

BRASS



| Cod. Code | Ø nominale nominal Ø | | €/cad. €/each | Disp. Avail. | | |
|-----------|----------------------|-------|---------------|--------------|---|--|
| | mm | inch | | | | |
| 3000681 | 10 | 3/8 | 2,30 | M | - | |
| 3000116 | 13 | 1/2 | 2,48 | M | - | |
| 3000117 | 16 | 5/8 | 2,68 | M | - | |
| 3000118 | 19 | 3/4 | 2,84 | M | - | |
| 3000119 | 25 | 1 | 3,52 | M | - | |
| 3000120 | 32 | 1-1/4 | 4,86 | M | - | |
| 3000121 | 38 | 1-1/2 | 6,14 | M | - | |



tubi consigliati
recommended hose

Mandrino: Montreal
Mandrel hose Nairobi

Long Length: Air-Water
Long Length hose Multiform Yellow
Multiform Blue

Semiraccordo filettato femmina BSP

OTTONE

Fitting female BSP thread

BRASS



| | | | | | |
|---------|----|-------|------|---|---|
| 3000122 | 10 | 3/8 | 2,54 | M | - |
| 3000123 | 13 | 1/2 | 2,52 | M | - |
| 3000124 | 19 | 3/4 | 2,48 | M | - |
| 3000125 | 25 | 1 | 2,46 | M | - |
| 3000126 | 32 | 1-1/4 | 3,34 | M | - |
| 3000127 | 38 | 1-1/2 | 3,96 | M | - |

Semiraccordo filettato maschio BSP

OTTONE

Fitting BSP male thread

BRASS



| | | | | | |
|---------|----|-------|------|---|---|
| 3000128 | 10 | 3/8 | 2,32 | M | - |
| 3000129 | 13 | 1/2 | 2,28 | M | - |
| 3000130 | 19 | 3/4 | 2,38 | M | - |
| 3000131 | 25 | 1 | 2,58 | M | - |
| 3000132 | 32 | 1-1/4 | 3,44 | M | - |
| 3000133 | 38 | 1-1/2 | 3,74 | M | - |

Tappo

OTTONE

Cap

BRASS



| | | | | | |
|---------|---|---|------|---|---|
| 3000134 | - | - | 2,22 | M | - |
|---------|---|---|------|---|---|

Guarnizione in gomma

Rubber gasket



| | | | | | |
|---------|---|---|------|---|-----|
| 3000135 | - | - | 0,30 | M | 100 |
|---------|---|---|------|---|-----|

simbologia listino *price list symbol*

Disp.: disponibilità

Avail.: *availability*

M: magazzino *warehouse*

R: richiesto *request*

quantità minima *minimum quantity*



kamlocking

Raccordo femmina con portagomma tipo C

ALLUMINIO

Female insert type C

ALUMINIUM



| Cod. Code | Ø nominale nominal Ø | | €/cad. €/each | Disp. Avail. | M | - |
|-----------|----------------------|-------|---------------|--------------|---|---|
| | mm | inch | | | | |
| 3000136 | * 13 | 1/2 | 7,48 | M | - | |
| 3000137 | 19 | 3/4 | 7,48 | M | - | |
| 3000138 | 25 | 1 | 9,26 | M | - | |
| 3000139 | 32 | 1-1/4 | 10,04 | M | - | |
| 3000140 | 38 | 1-1/2 | 11,04 | M | - | |
| 3000141 | 50 | 2 | 12,66 | M | - | |
| 3000142 | 65 | 2-1/2 | 19,94 | M | - | |
| 3000143 | 80 | 3 | 20,10 | M | - | |
| 3000144 | 100 | 4 | 31,92 | R | 5 | |
| 3000145 | 125 | 5 | 63,18 | R | 5 | |
| 3000146 | 150 | 6 | 92,12 | R | 5 | |

Raccordo femmina con portagomma tipo C

OTTONE

Female insert type C

BRASS



| | | | | | | |
|---------|------|-------|--------|---|---|--|
| 3000147 | * 13 | 1/2 | 12,66 | M | - | |
| 3000148 | 19 | 3/4 | 12,66 | M | - | |
| 3000149 | 25 | 1 | 14,64 | M | - | |
| 3000150 | 32 | 1-1/4 | 17,00 | M | - | |
| 3000151 | 38 | 1-1/2 | 22,27 | M | - | |
| 3000152 | 50 | 2 | 25,62 | M | - | |
| 3000153 | 65 | 2-1/2 | 36,78 | M | - | |
| 3000154 | 80 | 3 | 45,66 | M | - | |
| 3000155 | 100 | 4 | 66,13 | R | 5 | |
| 3000156 | 125 | 5 | 194,90 | R | 5 | |
| 3000157 | 150 | 6 | 175,32 | R | 5 | |

Raccordo femmina con portagomma tipo C

INOX

Female insert type C

STAINLESS STEEL



| | | | | | | |
|---------|------|-------|--------|---|---|--|
| 3000158 | * 13 | 1/2 | 21,60 | M | - | |
| 3000159 | 19 | 3/4 | 22,18 | M | - | |
| 3000160 | 25 | 1 | 23,43 | M | - | |
| 3000161 | 32 | 1-1/4 | 33,47 | M | - | |
| 3000162 | 38 | 1-1/2 | 41,11 | M | - | |
| 3000163 | 50 | 2 | 51,04 | M | - | |
| 3000164 | 65 | 2-1/2 | 61,58 | M | - | |
| 3000165 | 80 | 3 | 95,50 | M | - | |
| 3000166 | 100 | 4 | 136,36 | R | 5 | |
| 3000167 | 125 | 5 | 393,28 | R | 5 | |
| 3000168 | 150 | 6 | 428,72 | R | 5 | |

Attacco maschio tipo F filettatura maschio BSP

ALLUMINIO

Male adapter type F male BSP thread

ALUMINIUM



| | | | | | | |
|---------|-----|-------|-------|---|---|--|
| 3000169 | 13 | 1/2 | 5,12 | M | - | |
| 3000170 | 19 | 3/4 | 5,12 | M | - | |
| 3000171 | 25 | 1 | 5,86 | M | - | |
| 3000172 | 32 | 1-1/4 | 6,14 | M | - | |
| 3000173 | 38 | 1-1/2 | 6,38 | M | - | |
| 3000174 | 50 | 2 | 7,88 | M | - | |
| 3000175 | 65 | 2-1/2 | 13,98 | M | - | |
| 3000176 | 80 | 3 | 14,56 | M | - | |
| 3000177 | 100 | 4 | 26,38 | R | 5 | |
| 3000178 | 125 | 5 | 58,74 | R | 5 | |
| 3000179 | 150 | 6 | 52,74 | R | 5 | |

Attacco maschio tipo F filettatura maschio BSP

OTTONE

Male adapter type F male BSP thread

BRASS



| | | | | | | |
|---------|-----|-------|--------|---|---|--|
| 3000180 | 13 | 1/2 | 6,76 | M | - | |
| 3000181 | 19 | 3/4 | 6,76 | M | - | |
| 3000182 | 25 | 1 | 7,32 | M | - | |
| 3000183 | 32 | 1-1/4 | 11,61 | M | - | |
| 3000184 | 38 | 1-1/2 | 15,38 | M | - | |
| 3000185 | 50 | 2 | 18,80 | M | - | |
| 3000186 | 65 | 2-1/2 | 27,00 | M | - | |
| 3000187 | 80 | 3 | 35,60 | M | - | |
| 3000188 | 100 | 4 | 51,93 | R | 5 | |
| 3000189 | 125 | 5 | 142,92 | R | 5 | |
| 3000190 | 150 | 6 | 117,20 | R | 5 | |

tubi consigliati recommended hose

Mandrino: Montreal
Mandrel hose Toronto
Oslo
Nairobi
Max
Essen
Australia
Puertorico
Orlando
Everest
Supertop
Supertop/LL

Per il corretto abbinamento tra tubo, materiale raccordo e fluido veicolato contattare IVG Colbachini

For the correct combination of hose, fitting material and conveyed fluid contact IVG Colbachini

* Ø 13: potrà essere fornito a nostra discrezione con 1 o 2 leve a seconda della disponibilità di magazzino. Il raccordo con 1 leva garantisce le stesse prestazioni delle 2 leve.

* Ø 13: may be supplied with one or two arms depending on stock availability. The fitting with one arm guarantees the same performance as the one with two arms.





kamlocking

Attacco maschio
tipo F filettatura
maschio BSP

INOX

Male adapter
type F male
BSP thread

STAINLESS STEEL



| Cod. Code | Ø nominale nominal Ø | mm inch | €/cad. €/each | Disp. Avail. | |
|-----------|----------------------|---------|---------------|--------------|---|
| 3000191 | 13 | 1/2 | 11,88 | M | - |
| 3000192 | 19 | 3/4 | 12,14 | M | - |
| 3000193 | 25 | 1 | 20,39 | M | - |
| 3000194 | 32 | 1-1/4 | 26,90 | M | - |
| 3000195 | 38 | 1-1/2 | 37,00 | M | - |
| 3000196 | 50 | 2 | 43,96 | M | - |
| 3000197 | 65 | 2-1/2 | 60,21 | M | - |
| 3000198 | 80 | 3 | 75,49 | M | - |
| 3000199 | 100 | 4 | 112,69 | R | 5 |
| 3000200 | 125 | 5 | 405,02 | R | 5 |
| 3000201 | 150 | 6 | 417,14 | R | 5 |

Attacco maschio
tipo A filettato
femmina BSP

ALLUMINIO

Male adapter
type A female
BSP thread

ALUMINIUM



| | | | | | |
|---------|-----|-------|-------|---|---|
| 3000202 | 13 | 1/2 | 3,76 | M | - |
| 3000203 | 19 | 3/4 | 3,76 | M | - |
| 3000204 | 25 | 1 | 4,48 | M | - |
| 3000205 | 32 | 1-1/4 | 5,12 | M | - |
| 3000206 | 38 | 1-1/2 | 5,62 | M | - |
| 3000207 | 50 | 2 | 6,50 | M | - |
| 3000208 | 65 | 2-1/2 | 10,68 | M | - |
| 3000209 | 80 | 3 | 11,16 | M | - |
| 3000210 | 100 | 4 | 17,72 | R | 5 |
| 3000211 | 125 | 5 | 35,88 | R | 5 |
| 3000212 | 150 | 6 | 38,84 | R | 5 |

Attacco maschio
tipo A filettato
femmina BSP

OTTONE

Male adapter
type A female
BSP thread

BRASS



| | | | | | |
|---------|-----|-------|--------|---|---|
| 3000213 | 13 | 1/2 | 5,32 | M | - |
| 3000214 | 19 | 3/4 | 5,32 | M | - |
| 3000215 | 25 | 1 | 6,76 | M | - |
| 3000216 | 32 | 1-1/4 | 10,18 | M | - |
| 3000217 | 38 | 1-1/2 | 11,61 | M | - |
| 3000218 | 50 | 2 | 14,53 | M | - |
| 3000219 | 65 | 2-1/2 | 24,99 | M | - |
| 3000220 | 80 | 3 | 26,20 | M | - |
| 3000221 | 100 | 4 | 43,24 | R | 5 |
| 3000222 | 125 | 5 | 113,64 | R | 5 |
| 3000223 | 150 | 6 | 85,99 | R | 5 |

Attacco maschio
tipo A filettato
femmina BSP

INOX

Male adapter
type A female
BSP thread

STAINLESS STEEL



| | | | | | |
|---------|-----|-------|--------|---|---|
| 3000224 | 13 | 1/2 | 12,20 | M | - |
| 3000225 | 19 | 3/4 | 12,51 | M | - |
| 3000226 | 25 | 1 | 14,47 | M | - |
| 3000227 | 32 | 1-1/4 | 21,99 | M | - |
| 3000228 | 38 | 1-1/2 | 25,14 | M | - |
| 3000229 | 50 | 2 | 30,38 | M | - |
| 3000230 | 65 | 2-1/2 | 49,58 | M | - |
| 3000231 | 80 | 3 | 55,45 | M | - |
| 3000232 | 100 | 4 | 84,90 | R | 5 |
| 3000233 | 125 | 5 | 246,54 | R | 5 |
| 3000234 | 150 | 6 | 278,08 | R | 5 |

Raccordo maschio
con portagomma
tipo E

ALLUMINIO

Male insert
type E

ALUMINIUM



| | | | | | |
|---------|-----|-------|-------|---|---|
| 3000235 | 13 | 1/2 | 5,12 | M | - |
| 3000236 | 19 | 3/4 | 5,12 | M | - |
| 3000237 | 25 | 1 | 4,96 | M | - |
| 3000238 | 32 | 1-1/4 | 6,26 | M | - |
| 3000239 | 38 | 1-1/2 | 5,54 | M | - |
| 3000240 | 50 | 2 | 7,52 | M | - |
| 3000241 | 65 | 2-1/2 | 12,54 | M | - |
| 3000242 | 80 | 3 | 13,06 | M | - |
| 3000243 | 100 | 4 | 24,34 | R | 5 |
| 3000244 | 125 | 5 | 54,58 | R | 5 |
| 3000245 | 150 | 6 | 61,98 | R | 5 |



tubi consigliati
recommended hose

Mandrino: Montreal
Mandrel hose Toronto
Oslo
Nairobi
Max
Essen
Australia
Puertorico
Orlando
Everest
Supertop
Supertop/LL

Per il corretto abbinamento tra tubo, materiale raccordo e fluido veicolato contattare IVG Colbachini

For the correct combination of hose, fitting material and conveyed fluid contact IVG Colbachini

* Ø 13: potrà essere fornito a nostra discrezione con 1 o 2 leve a seconda della disponibilità di magazzino. Il raccordo con 1 leva garantisce le stesse prestazioni delle 2 leve.

* Ø 13: may be supplied with one or two arms depending on stock availability. The fitting with one arm guarantees the same performance as the one with two arms.

simbologia listino price list symbol

Disp.: disponibilità

Avail.: availability

M: magazzino warehouse

R: richiesto request



quantità minima minimum quantity



kamlocking

Raccordo maschio con portagomma tipo E

OTTONE

Male insert type E

BRASS



| Cod. Code | Ø nominale nominal Ø | | €/cad. €/each | Disp. Avail. | |
|-----------|----------------------|-------|---------------|--------------|---|
| | mm | inch | | | |
| 3000246 | 13 | 1/2 | 7,77 | M | - |
| 3000247 | 19 | 3/4 | 7,77 | M | - |
| 3000248 | 25 | 1 | 9,17 | M | - |
| 3000249 | 32 | 1-1/4 | 10,18 | M | - |
| 3000250 | 38 | 1-1/2 | 13,04 | M | - |
| 3000251 | 50 | 2 | 20,23 | M | - |
| 3000252 | 65 | 2-1/2 | 25,56 | M | - |
| 3000253 | 80 | 3 | 38,46 | M | - |
| 3000254 | 100 | 4 | 57,20 | R | 5 |
| 3000255 | 125 | 5 | 154,44 | R | 5 |
| 3000256 | 150 | 6 | 147,89 | R | 5 |

Raccordo maschio con portagomma tipo E

INOX

Male insert type E

STAINLESS STEEL



| | | | | | |
|---------|-----|-------|--------|---|---|
| 3000257 | 13 | 1/2 | 12,20 | M | - |
| 3000258 | 19 | 3/4 | 12,51 | M | - |
| 3000259 | 25 | 1 | 16,93 | M | - |
| 3000260 | 32 | 1-1/4 | 25,14 | M | - |
| 3000261 | 38 | 1-1/2 | 28,11 | M | - |
| 3000262 | 50 | 2 | 38,02 | M | - |
| 3000263 | 65 | 2-1/2 | 53,44 | M | - |
| 3000264 | 80 | 3 | 69,61 | M | - |
| 3000265 | 100 | 4 | 120,14 | R | 5 |
| 3000266 | 125 | 5 | 340,44 | R | 5 |
| 3000267 | 150 | 6 | 370,76 | R | 5 |

Attacco femmina tipo B filettato maschio BSP

ALLUMINIO

Female adapter type B male BSP thread

ALUMINIUM



| | | | | | |
|---------|------|-------|-------|---|---|
| 3000268 | * 13 | 1/2 | 8,42 | M | - |
| 3000269 | 19 | 3/4 | 8,42 | M | - |
| 3000270 | 25 | 1 | 9,80 | M | - |
| 3000271 | 32 | 1-1/4 | 12,32 | M | - |
| 3000272 | 38 | 1-1/2 | 11,16 | M | - |
| 3000273 | 50 | 2 | 13,42 | M | - |
| 3000274 | 65 | 2-1/2 | 18,50 | M | - |
| 3000275 | 80 | 3 | 19,46 | M | - |
| 3000276 | 100 | 4 | 28,52 | R | 5 |
| 3000277 | 125 | 5 | 75,90 | R | 5 |
| 3000278 | 150 | 6 | 69,74 | R | 5 |

Attacco femmina tipo B filettato maschio BSP

OTTONE

Female adapter type B male BSP thread

BRASS



| | | | | | |
|---------|------|-------|--------|---|---|
| 3000279 | * 13 | 1/2 | 12,66 | M | - |
| 3000280 | 19 | 3/4 | 12,66 | M | - |
| 3000281 | 25 | 1 | 14,64 | M | - |
| 3000282 | 32 | 1-1/4 | 17,00 | M | - |
| 3000283 | 38 | 1-1/2 | 21,89 | M | - |
| 3000284 | 50 | 2 | 25,62 | M | - |
| 3000285 | 65 | 2-1/2 | 33,01 | M | - |
| 3000286 | 80 | 3 | 41,19 | M | - |
| 3000287 | 100 | 4 | 58,01 | R | 5 |
| 3000288 | 125 | 5 | 153,48 | R | 5 |
| 3000289 | 150 | 6 | 150,31 | R | 5 |

Attacco femmina tipo B filettato maschio BSP

INOX

Female adapter type B male BSP thread

STAINLESS STEEL



| | | | | | |
|---------|------|-------|--------|---|---|
| 3000290 | * 13 | 1/2 | 22,30 | M | - |
| 3000291 | 19 | 3/4 | 22,73 | M | - |
| 3000292 | 25 | 1 | 25,20 | M | - |
| 3000293 | 32 | 1-1/4 | 34,55 | M | - |
| 3000294 | 38 | 1-1/2 | 41,06 | M | - |
| 3000295 | 50 | 2 | 51,04 | M | - |
| 3000296 | 65 | 2-1/2 | 61,58 | M | - |
| 3000297 | 80 | 3 | 84,90 | M | - |
| 3000298 | 100 | 4 | 133,91 | R | 5 |
| 3000299 | 125 | 5 | 322,84 | R | 5 |
| 3000300 | 150 | 6 | 370,84 | R | 5 |

tubi consigliati recommended hose

| Mandrino: Mandrel hose | |
|---------------------------|--|
| Montreal | |
| Toronto | |
| Oslo | |
| Nairobi | |
| Max | |
| Essen | |
| Australia | |
| Puertorico | |
| Orlando | |
| Everest | |
| Supertop | |
| Supertop/LL | |

Per il corretto abbinamento tra tubo, materiale raccordo e fluido veicolato contattare IVG Colbachini

For the correct combination of hose, fitting material and conveyed fluid contact IVG Colbachini

* Ø 13: potrà essere fornito a nostra discrezione con 1 o 2 leve a seconda della disponibilità di magazzino. Il raccordo con 1 leva garantisce le stesse prestazioni delle 2 leve.

* Ø 13: may be supplied with one or two arms depending on stock availability. The fitting with one arm guarantees the same performance as the one with two arms.





kamlocking

Attacco femmina tipo D
filettato femmina BSP

ALLUMINIO

Female
adapter type
D female
BSP thread

ALUMINIUM



| Cod. Code | Ø nominale nominal Ø | | €/cad. €/each | Disp. Avail. | |
|--------------|-------------------------|-------|------------------|-----------------|---|
| | mm | inch | | | |
| 3000301 | * 13 | 1/2 | 8,42 | M | - |
| 3000302 | 19 | 3/4 | 8,42 | M | - |
| 3000303 | 25 | 1 | 9,80 | M | - |
| 3000304 | 32 | 1-1/4 | 11,22 | M | - |
| 3000305 | 38 | 1-1/2 | 11,16 | M | - |
| 3000306 | 50 | 2 | 13,06 | M | - |
| 3000307 | 65 | 2-1/2 | 19,46 | M | - |
| 3000308 | 80 | 3 | 21,30 | M | - |
| 3000309 | 100 | 4 | 32,88 | R | 5 |
| 3000310 | 125 | 5 | 75,86 | R | 5 |
| 3000311 | 150 | 6 | 77,20 | R | 5 |

Attacco femmina tipo D
filettato femmina BSP

OTTONE

Female
adapter type
D female
BSP thread

BRASS



| | | | | | |
|---------|------|-------|--------|---|---|
| 3000312 | * 13 | 1/2 | 13,58 | M | - |
| 3000313 | 19 | 3/4 | 13,58 | M | - |
| 3000314 | 25 | 1 | 16,08 | M | - |
| 3000315 | 32 | 1-1/4 | 19,85 | M | - |
| 3000316 | 38 | 1-1/2 | 21,78 | M | - |
| 3000317 | 50 | 2 | 26,05 | M | - |
| 3000318 | 65 | 2-1/2 | 35,91 | M | - |
| 3000319 | 80 | 3 | 42,13 | M | - |
| 3000320 | 100 | 4 | 63,77 | R | 5 |
| 3000321 | 125 | 5 | 162,50 | R | 5 |
| 3000322 | 150 | 6 | 146,47 | R | 5 |

Attacco femmina
tipo D filettato
femmina BSP

INOX

Female
adapter type
D female
BSP thread

STAINLESS
STEEL



| | | | | | |
|---------|------|-------|--------|---|---|
| 3000323 | * 13 | 1/2 | 22,30 | M | - |
| 3000324 | 19 | 3/4 | 22,73 | M | - |
| 3000325 | 25 | 1 | 25,20 | M | - |
| 3000326 | 32 | 1-1/4 | 36,95 | M | - |
| 3000327 | 38 | 1-1/2 | 45,42 | M | - |
| 3000328 | 50 | 2 | 50,97 | M | - |
| 3000329 | 65 | 2-1/2 | 61,58 | M | - |
| 3000330 | 80 | 3 | 84,90 | M | - |
| 3000331 | 100 | 4 | 133,91 | R | 5 |
| 3000332 | 125 | 5 | 399,18 | R | 5 |
| 3000333 | 150 | 6 | 337,01 | R | 5 |

Tappo maschio
tipo DP

ALLUMINIO

Male cap
type DP

ALUMINIUM



| | | | | | |
|---------|-----|-------|-------|---|---|
| 3000334 | 13 | 1/2 | 4,72 | M | - |
| 3000335 | 19 | 3/4 | 4,72 | M | - |
| 3000336 | 25 | 1 | 5,12 | M | - |
| 3000337 | 32 | 1-1/4 | 5,16 | M | - |
| 3000338 | 38 | 1-1/2 | 5,18 | M | - |
| 3000339 | 50 | 2 | 5,54 | M | - |
| 3000340 | 65 | 2-1/2 | 9,26 | M | - |
| 3000341 | 80 | 3 | 7,88 | M | - |
| 3000342 | 100 | 4 | 13,42 | R | 5 |
| 3000343 | 125 | 5 | 27,38 | R | 5 |
| 3000344 | 150 | 6 | 31,04 | R | 5 |

Tappo maschio
tipo DP

OTTONE

Male cap
type DP

BRASS



| | | | | | |
|---------|-----|-------|-------|---|---|
| 3000345 | 13 | 1/2 | 6,76 | M | - |
| 3000346 | 19 | 3/4 | 6,76 | M | - |
| 3000347 | 25 | 1 | 9,17 | M | - |
| 3000348 | 32 | 1-1/4 | 9,62 | M | - |
| 3000349 | 38 | 1-1/2 | 10,18 | M | - |
| 3000350 | 50 | 2 | 12,03 | M | - |
| 3000351 | 65 | 2-1/2 | 17,38 | M | - |
| 3000352 | 80 | 3 | 21,22 | M | - |
| 3000353 | 100 | 4 | 31,75 | R | 5 |
| 3000354 | 125 | 5 | 88,46 | R | 5 |
| 3000355 | 150 | 6 | 81,70 | R | 5 |



tubi consigliati
recommended hose

Mandrino: Montreal
Toronto
Oslo
Nairobi
Max
Essen
Australia
Puertorico
Orlando
Everest
Supertop
Supertop/LL

Per il corretto abbinamento tra
tubo, materiale raccordo e fluido
veicolato contattare IVG Colbachini

For the correct combination of
hose, fitting material and conveyed
fluid contact IVG Colbachini

* Ø 13: potrà essere fornito a nostra
discrezione con 1 o 2 leve a seconda
della disponibilità di magazzino. Il rac-
cordo con 1 leva garantisce le stesse
prestazioni delle 2 leve.

* Ø 13: may be supplied with one or two
arms depending on stock availability. The
fitting with one arm guarantees the same
performance as the one with two arms.

simbologia listino price list symbol

Disp.: disponibilità

Avail.: availability

M: magazzino warehouse

R: richiesto request



quantità minima minimum quantity



kamlocking

Tappo maschio
tipo DP

INOX

Male cap
type DP

STAINLESS
STEEL



| Cod. Code | Ø nominale nominal Ø | | €/cad. €/each | Disp. Avail. | M | - |
|--------------|-------------------------|-------|------------------|-----------------|---|---|
| | mm | inch | | | | |
| 3000356 | 13 | 1/2 | 12,51 | M | - | |
| 3000357 | 19 | 3/4 | 12,82 | M | - | |
| 3000358 | 25 | 1 | 15,23 | M | - | |
| 3000359 | 32 | 1-1/4 | 20,52 | M | - | |
| 3000360 | 38 | 1-1/2 | 22,30 | M | - | |
| 3000361 | 50 | 2 | 25,39 | M | - | |
| 3000362 | 65 | 2-1/2 | 39,54 | M | - | |
| 3000363 | 80 | 3 | 51,10 | M | - | |
| 3000364 | 100 | 4 | 63,17 | R | 5 | |
| 3000365 | 125 | 5 | 291,26 | R | 5 | |
| 3000366 | 150 | 6 | 296,80 | R | 5 | |

Tappo femmina
tipo DC

ALLUMINIO

Female cap
type DC

ALUMINIUM



| | | | | | | |
|---------|------|-------|-------|---|---|--|
| 3000367 | * 13 | 1/2 | 7,52 | M | - | |
| 3000368 | 19 | 3/4 | 8,42 | M | - | |
| 3000369 | 25 | 1 | 8,42 | M | - | |
| 3000370 | 32 | 1-1/4 | 10,68 | M | - | |
| 3000371 | 38 | 1-1/2 | 10,68 | M | - | |
| 3000372 | 50 | 2 | 11,16 | M | - | |
| 3000373 | 65 | 2-1/2 | 15,74 | M | - | |
| 3000374 | 80 | 3 | 16,30 | M | - | |
| 3000375 | 100 | 4 | 21,06 | R | 5 | |
| 3000376 | 125 | 5 | 50,06 | R | 5 | |
| 3000377 | 150 | 6 | 60,08 | R | 5 | |

Tappo
femmina
tipo DC

OTTONE

Female cap
type DC

BRASS



| | | | | | | |
|---------|------|-------|--------|---|---|--|
| 3000378 | * 13 | 1/2 | 12,62 | M | - | |
| 3000379 | 19 | 3/4 | 12,62 | M | - | |
| 3000380 | 25 | 1 | 12,72 | M | - | |
| 3000381 | 32 | 1-1/4 | 16,44 | M | - | |
| 3000382 | 38 | 1-1/2 | 20,29 | M | - | |
| 3000383 | 50 | 2 | 22,70 | M | - | |
| 3000384 | 65 | 2-1/2 | 28,17 | M | - | |
| 3000385 | 80 | 3 | 37,78 | M | - | |
| 3000386 | 100 | 4 | 48,39 | R | 5 | |
| 3000387 | 125 | 5 | 124,04 | R | 5 | |
| 3000388 | 150 | 6 | 123,01 | R | 5 | |

Tappo femmina
tipo DC

INOX

Female cap
type DC

STAINLESS
STEEL



| | | | | | | |
|---------|------|-------|--------|---|---|--|
| 3000389 | * 13 | 1/2 | 19,96 | M | - | |
| 3000390 | 19 | 3/4 | 20,39 | M | - | |
| 3000391 | 25 | 1 | 22,18 | M | - | |
| 3000392 | 32 | 1-1/4 | 30,44 | M | - | |
| 3000393 | 38 | 1-1/2 | 40,48 | M | - | |
| 3000394 | 50 | 2 | 44,73 | M | - | |
| 3000395 | 65 | 2-1/2 | 52,49 | M | - | |
| 3000396 | 80 | 3 | 70,94 | M | - | |
| 3000397 | 100 | 4 | 100,38 | R | 5 | |
| 3000398 | 125 | 5 | 334,54 | R | 5 | |
| 3000399 | 150 | 6 | 361,50 | R | 5 | |

Guarnizione

VITON®

Gasket

VITON®



| | | | | | | |
|---------|-----|-------|-------|---|----|--|
| 4702638 | 13 | 1/2 | 3,20 | M | 10 | |
| 4702212 | 19 | 3/4 | 3,20 | M | 10 | |
| 4702220 | 25 | 1 | 3,44 | M | 10 | |
| 4702239 | 32 | 1-1/4 | 5,00 | M | 10 | |
| 4702247 | 38 | 1-1/2 | 6,56 | M | 5 | |
| 2205122 | 50 | 2 | 7,60 | M | 5 | |
| 4702263 | 65 | 2-1/2 | 10,26 | M | 5 | |
| 4702271 | 75 | 3 | 15,72 | M | 5 | |
| 4702280 | 100 | 4 | 23,66 | M | 5 | |

tubi consigliati recommended hose

Mandrino: Montreal
Mandrel hose Toronto
Oslo
Nairobi
Max
Essen
Australia
Puertorico
Orlando
Everest
Supertop
Supertop/LL

Per il corretto abbinamento tra tubo, materiale raccordo e fluido veicolato contattare IVG Colbachini

For the correct combination of hose, fitting material and conveyed fluid contact IVG Colbachini

* Ø 13: potrà essere fornito a nostra discrezione con 1 o 2 leve a seconda della disponibilità di magazzino. Il raccordo con 1 leva garantisce le stesse prestazioni delle 2 leve.

* Ø 13: may be supplied with one or two arms depending on stock availability. The fitting with one arm guarantees the same performance as the one with two arms.



kamlocking

Guarnizione
BUNA

Gasket
BUNA



| Cod. Code | Ø nominale nominal Ø | mm | inch | €/cad. €/each | Disp. Avail. | |
|-----------|----------------------|-------|------|---------------|--------------|--|
| 4700880 | 13 | 1/2 | 0,42 | M | 50 | |
| 4700899 | 19 | 3/4 | 0,42 | M | 50 | |
| 4700910 | 25 | 1 | 0,42 | M | 50 | |
| 4700929 | 32 | 1-1/4 | 0,60 | M | 50 | |
| 4700937 | 38 | 1-1/2 | 0,68 | M | 50 | |
| 4700864 | 50 | 2 | 0,72 | M | 50 | |
| 4700945 | 65 | 2-1/2 | 0,84 | M | 50 | |
| 4700872 | 75 | 3 | 1,06 | M | 10 | |
| 4700686 | 100 | 4 | 1,34 | R | 10 | |
| 4700953 | 125 | 5 | 2,18 | R | 10 | |
| 4700694 | 150 | 6 | 2,32 | R | 10 | |

tubi consigliati
recommended hose

Mandrino: Montreal, Toronto, Oslo, Nairobi, Max, Essen, Australia, Puertorico, Orlando, Everest, Supertop, Supertop/LL

Mandrel hose

Per il corretto abbinamento tra tubo, materiale raccordo e fluido veicolato contattare IVG Colbachini

For the correct combination of hose, fitting material and conveyed fluid contact IVG Colbachini

Raccordo maschio a saldare AWB
INOX

Male fitting AWB
STAINLESS STEEL



| | | | | | |
|---------|-----|-------|--------|---|---|
| 2210312 | 13 | 1/2 | 11,98 | R | 5 |
| 2210320 | 19 | 3/4 | 12,29 | R | 5 |
| 2210339 | 25 | 1 | 14,25 | R | 5 |
| 2210347 | 32 | 1-1/4 | 21,77 | R | 5 |
| 2210355 | 38 | 1-1/2 | 24,92 | R | 5 |
| 2210363 | 50 | 2 | 30,16 | R | 5 |
| 2210371 | 65 | 2-1/2 | 49,04 | R | 5 |
| 2210380 | 75 | 3 | 54,90 | R | 5 |
| 2210398 | 100 | 4 | 84,34 | R | 5 |
| 2210401 | 152 | 6 | 161,15 | R | 5 |

* Ø 13: potrà essere fornito a nostra discrezione con 1 o 2 leve a seconda della disponibilità di magazzino. Il raccordo con 1 leva garantisce le stesse prestazioni delle 2 leve.

* Ø 13: may be supplied with one or two arms depending on stock availability. The fitting with one arm guarantees the same performance as the one with two arms.

Raccordo femmina a saldare DWB
INOX

Female fitting DWB
STAINLESS STEEL



| | | | | | |
|---------|------|-------|--------|---|---|
| 2210410 | * 13 | 1/2 | 22,08 | R | 5 |
| 2210428 | 19 | 3/4 | 22,52 | R | 5 |
| 2210436 | 25 | 1 | 24,98 | R | 5 |
| 2210444 | 32 | 1-1/4 | 36,73 | R | 5 |
| 2210452 | 38 | 1-1/2 | 45,20 | R | 5 |
| 2210460 | 50 | 2 | 50,75 | R | 5 |
| 2210479 | 65 | 2-1/2 | 61,03 | R | 5 |
| 2210487 | 75 | 3 | 84,34 | R | 5 |
| 2210495 | 100 | 4 | 133,37 | R | 5 |
| 2210509 | 152 | 6 | 264,46 | R | 5 |

Attacco riduzione maschio tipo A 3/4" filettato femmina BSP 1/2"
OTTONE

Male adapter A 3/4" female BSP thread 1/2"
BRASS



| Cod. Code | €/cad. €/each | Disp. Avail. | |
|-----------|---------------|--------------|---|
| 2204509 | 7,43 | R | - |

Attacco riduzione femmina tipo D 3/4" filettato femmina BSP 1/2"
OTTONE

Female adapter D 3/4" female BSP thread 1/2"
BRASS



| Cod. Code | €/cad. €/each | Disp. Avail. | |
|-----------|---------------|--------------|---|
| 2204495 | 12,01 | R | - |

simbologia listino *price list symbol*

Disp.: disponibilità

Avail.: availability

M: magazzino warehouse

R: richiesto request

quantità minima *minimum quantity*





kamlocking DIN 2828

Raccordo
maschio
INOX

Male
STAINLESS
STEEL



| Cod. Code | Ø nominale nominal Ø | | €/cad. €/each | Disp. Avail. | R | Q |
|-----------|----------------------|-------|---------------|--------------|---|---|
| | mm | inch | | | | |
| 3000928 | 19 | 3/4 | 26,69 | R | 2 | 2 |
| 3000929 | 25 | 1 | 43,19 | R | 2 | 2 |
| 3000930 | 32 | 1-1/4 | 55,04 | R | 2 | 2 |
| 3000931 | 38 | 1-1/2 | 65,56 | R | 2 | 2 |
| 3000932 | 50 | 2 | 98,28 | R | 2 | 2 |
| 3000933 | 65 | 2-1/2 | 134,01 | R | 1 | 1 |
| 3000934 | 75 | 3 | 182,10 | R | 1 | 1 |
| 3000935 | 100 | 4 | 306,89 | R | 1 | 1 |

tubi consigliati
recommended hose

Mandrino: Montreal
Mandrel hose Oslo
Nairobi
Max
Essen
Australia
Puertorico
Orlando
Everest
Supertop
Supertop/LL

Per il corretto abbinamento tra tubo, materiale raccordo e fluido veicolato contattare IVG Colbachini

For the correct combination of hose, fitting material and conveyed fluid contact IVG Colbachini

Raccordo
femmina
INOX

Female
STAINLESS
STEEL



| | | | | | | |
|---------|-----|-------|--------|---|---|---|
| 3000920 | 19 | 3/4 | 46,82 | R | 2 | 2 |
| 3000921 | 25 | 1 | 65,26 | R | 2 | 2 |
| 3000922 | 32 | 1-1/4 | 77,01 | R | 2 | 2 |
| 3000923 | 38 | 1-1/2 | 108,28 | R | 2 | 2 |
| 3000924 | 50 | 2 | 141,61 | R | 2 | 2 |
| 3000925 | 65 | 2-1/2 | 204,46 | R | 1 | 1 |
| 3000926 | 75 | 3 | 253,34 | R | 1 | 1 |
| 3000927 | 100 | 4 | 321,57 | R | 1 | 1 |

Raccordo
maschio
OTTONE

Male
BRASS



| | | | | | | |
|---------|-----|-------|--------|---|---|---|
| 3000944 | 19 | 3/4 | 17,47 | R | 2 | 2 |
| 3000945 | 25 | 1 | 21,56 | R | 2 | 2 |
| 3000946 | 32 | 1-1/4 | 22,19 | R | 2 | 2 |
| 3000947 | 38 | 1-1/2 | 27,87 | R | 2 | 2 |
| 3000948 | 50 | 2 | 44,82 | R | 2 | 2 |
| 3000949 | 65 | 2-1/2 | 45,96 | R | 1 | 1 |
| 3000950 | 75 | 3 | 74,34 | R | 1 | 1 |
| 3000951 | 100 | 4 | 124,30 | R | 1 | 1 |

Raccordo
femmina
OTTONE

Female
BRASS



| | | | | | | |
|---------|-----|-------|--------|---|---|---|
| 3000936 | 19 | 3/4 | 27,18 | R | 2 | 2 |
| 3000937 | 25 | 1 | 33,55 | R | 2 | 2 |
| 3000938 | 32 | 1-1/4 | 37,17 | R | 2 | 2 |
| 3000939 | 38 | 1-1/2 | 42,50 | R | 2 | 2 |
| 3000940 | 50 | 2 | 55,20 | R | 2 | 2 |
| 3000941 | 65 | 2-1/2 | 134,01 | R | 1 | 1 |
| 3000942 | 75 | 3 | 182,10 | R | 1 | 1 |
| 3000943 | 100 | 4 | 306,89 | R | 1 | 1 |



storz

Semiraccordo con portagomma (testa girevole)

ALLUMINIO

Swivel head fitting with insert

ALUMINIUM



| Cod. Code | dist. fra le griffe dist. between fingers | Ø nominale nominal Ø | mm | inch | €/cad. Disp. €/each Avail. | | |
|-----------|--|-------------------------|-------|--------|-------------------------------|---|--|
| 3000400 | 31 | 25 | 1 | 8,94 | M | - | |
| 3000401 | 66 | 38 | 1-1/2 | 15,16 | M | - | |
| 3000402 | 66 | 45 | 1-3/4 | 15,16 | M | - | |
| 3000403 | 66 | 52 | 2 | 13,32 | M | - | |
| 2202700 | 66 | 60 | - | 26,12 | M | - | |
| 3000404 | 89 | 65 | 2-1/2 | 22,00 | M | - | |
| 2202204 | 89 | 70 | - | 57,58 | M | - | |
| 3000405 | 89 | 75 | 3 | 17,20 | M | - | |
| 3000406 | 89 | 80 | 3-1/4 | 23,30 | M | - | |
| 3000407 | 133 | 90 | 3-1/2 | 65,96 | M | - | |
| 3000408 | 133 | 100 | 4 | 28,60 | M | - | |
| 3000409 | 148 | 125 | 5 | 68,66 | R | 5 | |
| 3000410 | 160 | 150 | 6 | 97,08 | R | 5 | |
| 3000411 | 188 | 152 | 6 | 392,02 | R | 5 | |

tubi consigliati
recommended hose

Mandrino: Oslo
Mandrel hose
Amburgo
Montreal
Toronto
Sahara
Don

Green Line: Green Line
Green Line hose

Semiraccordo filettato femmina BSP (fisso)

ALLUMINIO

Fixed fitting female BSP thread

ALUMINIUM



| | | | | | | | |
|---------|-----|-----|-------|-------|---|---|--|
| 3000412 | 31 | 25 | 1 | 9,64 | M | - | |
| 3000413 | 66 | 38 | 1-1/2 | 14,30 | M | - | |
| 3000414 | 66 | 50 | 2 | 9,40 | M | - | |
| 3000415 | 89 | 65 | 2-1/2 | 13,72 | M | - | |
| 3000416 | 89 | 75 | 3 | 13,90 | M | - | |
| 3000417 | 133 | 100 | 4 | 22,90 | M | - | |
| 3000418 | 133 | 115 | 4-1/2 | 25,74 | M | 5 | |
| 3000419 | 148 | 125 | 5 | 78,78 | R | 5 | |
| 3000420 | 160 | 150 | 6 | 99,20 | R | 5 | |

Semiraccordo filettato maschio BSP (fisso)

ALLUMINIO

Fixed fitting male BSP thread

ALUMINIUM



| | | | | | | | |
|---------|-----|-----|-------|-------|---|---|--|
| 3000421 | 66 | 38 | 1-1/2 | 15,16 | M | - | |
| 3000422 | 66 | 50 | 2 | 9,68 | M | - | |
| 2202212 | 89 | 65 | 2-1/2 | 28,64 | M | - | |
| 3000423 | 89 | 75 | 3 | 12,58 | M | - | |
| 3000424 | 133 | 100 | 4 | 22,40 | M | - | |

Tappo con catenella

ALLUMINIO

Cap with chain

ALUMINIUM



| | | | | | | | |
|---------|-----|---|---|-------|---|---|--|
| 3000425 | 31 | - | - | 10,20 | M | - | |
| 3000426 | 66 | - | - | 13,10 | M | - | |
| 3000427 | 89 | - | - | 16,14 | M | - | |
| 3000428 | 133 | - | - | 26,90 | M | - | |

Riduzione

ALLUMINIO

Reducer

ALUMINIUM



| | | | | | | | |
|---------|--------|---|---|-------|---|---|--|
| 3000429 | 66x31 | - | - | 32,68 | M | - | |
| 3000430 | 89x66 | - | - | 26,84 | M | - | |
| 3000431 | 133x89 | - | - | 44,18 | M | - | |

simbologia listino price list symbol

Disp.: disponibilità

Avail.: availability

M: magazzino warehouse

R: richiesto request

quantità minima minimum quantity





storz

Semiraccordo filettato femmina BSP (testa girevole)

ALLUMINIO

Swivel head fitting female BSP thread

ALUMINIUM



| Cod. Code | dist. fra le griffe fingers | Ø nominale nominal Ø | mm | inch | €/cad. Disp. €/each Avail. | | |
|-----------|-----------------------------|----------------------|-------|------|----------------------------|---|---|
| 2202654 | 66 | 50 | 2 | | 36,98 | M | - |
| 2202662 | 89 | 65 | 2-1/2 | | 35,78 | M | - |
| 2202646 | 133 | 100 | 4 | | 94,50 | M | - |

| | | | | | | | |
|---------|-----|-----|-------|--|-------|---|---|
| 2202654 | 66 | 50 | 2 | | 36,98 | M | - |
| 2202662 | 89 | 65 | 2-1/2 | | 35,78 | M | - |
| 2202646 | 133 | 100 | 4 | | 94,50 | M | - |

tubi consigliati
recommended hose

Mandrino: Oslo
Mandrel hose
Amburgo
Montreal
Sahara
Don

Green Line: Green Line
Green Line hose

Semiraccordo filettato maschio BSP (testa girevole)

ALLUMINIO

Swivel head fitting male BSP thread

ALUMINIUM



| | | | | | | | |
|---------|-----|-----|-------|--|--------|---|---|
| 2202689 | 66 | 50 | 2 | | 25,76 | M | - |
| 2202697 | 89 | 65 | 2-1/2 | | 43,56 | M | - |
| 2202670 | 133 | 100 | 4 | | 101,52 | M | - |

Guarnizione

NBR

Gasket

NBR



| | | | | | | | |
|---------|-----|---|---|--|------|---|---|
| 4700287 | 66 | - | - | | 1,32 | M | 5 |
| 4700309 | 89 | - | - | | 2,38 | M | 5 |
| 4700317 | 133 | - | - | | 3,22 | M | 5 |

Guarnizione

SILICONE

Gasket

SILICON



| | | | | | | | |
|---------|-----|---|---|--|------|---|---|
| 4700155 | 66 | - | - | | 2,76 | M | 5 |
| 4700147 | 89 | - | - | | 4,34 | M | 5 |
| 4701437 | 133 | - | - | | 7,54 | M | 5 |

Chiavi

ACCIAIO
TEMPRATO

Spanner

TEMPERED
STEEL



| | | | | | |
|---------|-------------------|--|-------|---|---|
| 4701364 | B/C da 89 a 66 | | 16,90 | M | - |
| 4701666 | A/B/C da 133 a 66 | | 31,12 | M | - |

B/C: da 89 a 66
from 89 up to 66

A/B/C: da 133 a 66
from 133 up to 66

Chiavi

ACCIAIO
VERNICIATO

Spanner

VARNISHED
STEEL



| | | | | | |
|---------|----------------|--|-------|---|---|
| 4701674 | B/C da 89 a 66 | | 11,30 | M | 2 |
|---------|----------------|--|-------|---|---|

Chiavi

ACCIAIO
VERNICIATO

Spanner

VARNISHED
STEEL



| | | | | | |
|---------|-------------------|--|-------|---|---|
| 4700678 | A/B/C da 133 a 66 | | 20,04 | M | 2 |
|---------|-------------------|--|-------|---|---|



sabbiatura sandblasting

Semiaccordo fissato
con viti con
attacco rapido

NYLON

*Fitting with
quick adapter to
be applied with
screws*

NYLON



| Cod. Code mm | Ø nominale nominal Ø inch | €/cad. €/each | Disp. Avail. | |
|--------------------|---------------------------------|------------------|-----------------|---|
| 3000460 | 19 - | 32,60 | R | 5 |
| 3000461 | 25 - | 29,56 | R | 5 |
| 3000462 | 32 - | 28,16 | R | 5 |
| 3000463 | 38 - | 39,46 | R | 5 |
| 3000464 | 42 - | 42,28 | R | 5 |

tubi consigliati
recommended hose

Mandrino: Orinoco
Mandrel hose

Semiaccordo fissato
con viti con
attacco rapido

ACCIAIO
CARBONIO

*Fitting with quick
adapter to be
applied with
screws*

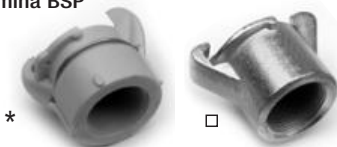
CARBON STEEL



| | | | | |
|---------|------|-------|---|---|
| 3000465 | 25 - | 10,38 | R | 5 |
| 3000466 | 32 - | 11,04 | R | 5 |
| 3000467 | 38 - | 16,32 | R | 5 |
| 3000468 | 42 - | 20,02 | R | 5 |

Semiaccordo
rapido filettato
femmina BSP

*Quick fitting female
BSP thread*



NYLON
NYLON

ACCIAIO AL CARBONIO
CARBON STEEL

| | | | | |
|-----------|------|-------|---|---|
| 3000469 * | 32 - | 33,82 | R | 5 |
| 3000470 □ | 32 - | 12,72 | R | 5 |
| 3000471 □ | 50 - | 18,62 | R | 5 |

Ghiera filettata
femmina BSP
Filettatura GAS

NYLON

*Female BSP thread
ferrule - GAS thread*

NYLON



| | | | | |
|---------|------|-------|---|---|
| 3000472 | 13 - | 24,06 | R | 5 |
| 3000473 | 19 - | 24,68 | R | 5 |
| 3000474 | 25 - | 23,48 | R | 5 |
| 3000475 | 32 - | 23,48 | R | 5 |
| 3000476 | 38 - | 24,36 | R | 5 |

simbologia listino *price list symbol*

Disp.: disponibilità

Avail.: *availability*

M: magazzino *warehouse*

R: richiesto *request*

quantità minima *minimum quantity*





sabbatura sandblasting

Ghiera filettata
femmina BSP
Filettatura rapida
NYLON



Female BSP thread
ferrule - rapid
thread
NYLON

| Cod. Code | Ø nominale nominal Ø | | €/cad. €/each | Disp. Avail. | R | 5 |
|--------------|-------------------------|------|------------------|-----------------|---|---|
| | mm | inch | | | | |
| 3000477 | 13 | - | 21,14 | R | 5 | |
| 3000478 | 19 | - | 24,22 | R | 5 | |
| 3000479 | 25 | - | 21,16 | R | 5 | |
| 3000480 | 32 | - | 21,16 | R | 5 | |
| 3000481 | 38 | - | 23,48 | R | 5 | |

tubi consigliati
recommended hose

Mandrino: Orinoco
Mandrel hose

Guarnizione in gomma

IDONEA PER RACCORDI
IN NYLON
COD. 3000460
COD. 3000461



Rubber gasket

SUITABLE FOR NYLON
FITTINGS
COD. 3000460
COD. 3000461

| | | | | | |
|---------|---|---|------|---|----|
| 3000482 | - | - | 4,88 | R | 10 |
|---------|---|---|------|---|----|

Guarnizione in gomma

IDONEA PER RACCORDI IN
NYLON
COD. 3000462
COD. 3000463
COD. 3000464
COD. 3000469



Rubber gasket

SUITABLE FOR NYLON
FITTINGS
COD. 3000462
COD. 3000463
COD. 3000464
COD. 3000469

| | | | | | |
|---------|---|---|------|---|----|
| 3000483 | - | - | 4,88 | R | 10 |
|---------|---|---|------|---|----|

Guarnizione in gomma

PER TUTTI I DIAMETRI
IN ACCIAIO CARBONIO



Rubber gasket

FOR ALL SIZES IN
CARBON STEEL

| | | | | | |
|---------|---|---|------|---|----|
| 4700457 | - | - | 1,84 | R | 10 |
|---------|---|---|------|---|----|





accessori per pompe calcestruzzo

plaster pump accessories

Giunto completo
(giunto, guarnizione,
spilla di sicurezza)

ACCIAIO
STAMPATO

*Snap coupling
complete with
gasket and
safety pin*

PRESSED STEEL



| Cod. Code | Ø nominale nominal Ø inch | €/cad. €/each | Disp. Avail. | | |
|-----------|---------------------------|---------------|--------------|---|--|
| 4701542 | 3 | 63,10 | M | - | |
| 4701550 | 3-1/4 | 63,30 | M | - | |
| 4701569 | 4 | 66,82 | M | - | |
| 4701577 | 4-1/2 | 70,76 | M | - | |
| 4701585 | 5 | 74,72 | M | - | |
| 4701593 | 5-1/2 | 78,78 | M | - | |
| 4701607 | 6 | 94,44 | M | - | |

tubi consigliati
recommended hose

Mandrino: Shannon
Mandrel hose

Giunto a leva

ACCIAIO
STAMPATO

*Snap
coupling*

PRESSED
STEEL



| | | | | |
|---------|-------|-------|---|---|
| 4707613 | 3 | 61,58 | M | - |
| 4708213 | 3-1/4 | 62,10 | M | - |
| 4710013 | 4 | 65,46 | M | - |
| 4711413 | 4-1/2 | 66,52 | M | - |
| 4712713 | 5 | 74,36 | M | - |
| 4714813 | 5-1/2 | 78,02 | M | - |
| 4715213 | 6 | 93,36 | M | - |

Guarnizione in
gomma

GOMMA

*Rubber
Gasket*

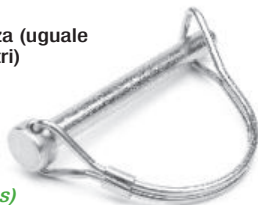


| | | | | |
|---------|-------|------|---|----|
| 4707614 | 3 | 2,80 | M | 10 |
| 4708214 | 3-1/4 | 2,86 | M | 10 |
| 4710014 | 4 | 3,14 | M | 10 |
| 4711514 | 4-1/2 | 3,30 | M | 10 |
| 4712714 | 5 | 3,58 | M | 10 |
| 4714814 | 5-1/2 | 3,82 | M | 10 |
| 4715214 | 6 | 5,06 | M | 10 |

Spilla di sicurezza (uguale
per tutti i diametri)

ACCIAIO
CARBONIO

*Safety pin (the
same for all sizes)*
CARBON STEEL



| | | | | |
|---------|---|------|---|---|
| 4701518 | - | 4,96 | M | 5 |
|---------|---|------|---|---|

Palle di
gommaspugna
per pulizia tubi

*Rubber/sponge
balls to clean
the hoses*



| Cod. Code | Ø est. idonea per tubo Ø int. max Ø ext. suitable for hose Ø int. max | €/cad. €/each | Disp. Avail. | | |
|-----------|--|---------------|--------------|---|---|
| 4700449 | 60 | 50 | 10,90 | M | - |
| 4701330 | 80 | 65 | 13,84 | M | - |
| 4700600 | 100 | 80 | 18,08 | M | - |
| 4700619 | 125 | 100 | 21,00 | M | - |
| 4700627 | 150 | 125 | 31,26 | M | - |

Densità: 160 Kg/m³
Density: 160 Kg/m³

Valvole a sfera
con ugello e
portagomma

*Sphere valves
with nozzle
and insert*



| | | | | |
|---------|-----------|-------|---|---|
| 4113185 | 1/2" x 20 | 14,20 | M | - |
| 4119185 | 3/4" x 25 | 23,72 | M | - |
| 4120185 | 3/4" x 20 | 23,72 | M | - |

simbologia listino *price list symbol*

Disp.: disponibilità

Avail.: availability

M: magazzino warehouse

R: richiesto request

quantità minima *minimum quantity*



betoncino cardan perrot

blast range cardan perrot

Raccordo completo con portagomma tornito DN 65 testa 70

ACCIAIO
CARBONIO



Complete fitting with machined insert DN 65 head 70

CARBON STEEL

| Cod. Code | Identificativo testa Head identification | €/cad. €/each | Disp. Avail. | | |
|-----------|--|---------------|--------------|---|--|
| 2210754 | 70 | 65,34 | R | - | |

tubi consigliati
recommended hose

Mandrino: Orinoco
Mandrel hose Niagara

Raccordo femmina con portagomma tornito DN 65 testa 70

ACCIAIO
CARBONIO



Female fitting with machined insert DN 65 head 70

CARBON STEEL

| | | | | | |
|---------|----|-------|---|---|--|
| 4270181 | 70 | 43,26 | R | - | |
|---------|----|-------|---|---|--|

fissaggio con fascette

applied with bands

Raccordo maschio con portagomma tornito DN 65 testa 70

ACCIAIO
CARBONIO



Male fitting with machined insert DN 65 head 70

CARBON STEEL

| | | | | | |
|---------|----|-------|---|---|--|
| 4270180 | 70 | 27,68 | R | - | |
|---------|----|-------|---|---|--|

Guarnizione in gomma

Rubber gasket



| | | | | | |
|---------|----|------|---|----|--|
| 3000091 | 70 | 1,50 | R | 20 | |
|---------|----|------|---|----|--|



betoncino cardan perrot

blast range cardan perrot

Raccordo completo
per tubo
Ø esterno 84

ACCIAIO
CARBONIO

Complete fitting for
hose OD 84 mm

CARBON STEEL



| Cod. Code | Identificativo testa Head identification | €/cad. €/each | Disp. Avail. | | |
|-----------|---|------------------|-----------------|---|--|
| 2204207 | 89 | 103,94 | M | - | |

tubi consigliati
recommended hose

Mandrino: Orinoco
Mandrel hose Niagara

Raccordo femmina
per tubo Ø esterno 84

ACCIAIO
CARBONIO

Female fitting for
hose OD 84 mm

CARBON STEEL



| | | | | | |
|---------|----|-------|---|---|--|
| 4206574 | 89 | 67,62 | M | - | |
|---------|----|-------|---|---|--|

fissaggio
con viti
applied with
screws

Raccordo maschio
per tubo Ø esterno 84

ACCIAIO
CARBONIO

Male fitting for hose
OD 84 mm

CARBON STEEL



| | | | | | |
|---------|----|-------|---|---|--|
| 4206573 | 89 | 40,26 | M | - | |
|---------|----|-------|---|---|--|

Guarnizione
in gomma

Rubber gasket



| | | | | | |
|---------|----|------|---|---|--|
| 3000092 | 89 | 3,18 | M | - | |
|---------|----|------|---|---|--|

Spina di sicurezza
ACCIAIO CARBONIO

Safety pin

CARBON STEEL



| | | | | | |
|---------|----|------|---|----|--|
| 4701526 | 89 | 2,60 | M | 10 | |
|---------|----|------|---|----|--|

simbologia listino price list symbol

Disp.: disponibilità

Avail.: availability

M: magazzino warehouse

R: richiesto request

quantità minima minimum quantity





betoncino plaster

Raccordo completo
a fascettare DN 65
filetto trapezoidale

ACCIAIO CARBONIO

*Complete fitting to
clamp DN 65
trapezoidal thread*

CARBON STEEL



| Cod. Code | Ø nominale nominal Ø mm | €/cad. €/each | Disp. Avail. | | |
|--------------|-------------------------------|------------------|-----------------|---|--|
| 2204215 | 65 | 89,40 | M | - | |

tubi consigliati
recommended hose

Mandrino: Orinoco
Mandrel hose Niagara

Raccordo maschio a
fascettare DN 65
filetto trapezoidale

ACCIAIO CARBONIO

*Male coupling to
clamp DN 65
trapezoidal thread*

CARBON STEEL



| | | | | | |
|---------|----|-------|---|---|--|
| 2204053 | 65 | 35,44 | M | - | |
|---------|----|-------|---|---|--|

Raccordo femmina
a fascettare DN 65
filetto trapezoidale

ACCIAIO CARBONIO

*Female fitting
to clamp DN 65
trapezoidal female
thread*

CARBON STEEL



| | | | | | |
|---------|----|-------|---|---|--|
| 2204045 | 65 | 24,12 | M | - | |
|---------|----|-------|---|---|--|

Guarnizione
in gomma

Rubber gasket



| | | | | | |
|---------|----|------|---|----|--|
| 4701534 | 65 | 1,00 | M | 20 | |
|---------|----|------|---|----|--|

Girella filetto
trapezoidale

ACCIAIO CARBONIO

*Nut trapezoidal
thread*

CARBON STEEL



| | | | | | |
|---------|----|-------|---|---|--|
| 2706017 | 65 | 35,78 | M | - | |
|---------|----|-------|---|---|--|

Raccordo femmina
filettato
femmina BSP

PLASTICA

*Female fitting
female BSP
thread*

PLASTIC



| | | | | | |
|---------|-------|-------|---|---|--|
| 2201569 | 27x1" | 25,78 | M | - | |
|---------|-------|-------|---|---|--|



betoncino plaster

Raccordo femmina con portagomma

GHISA

Female insert
CAST IRON



| Cod. Code | Ø nominale nominal Ø mm | €/cad. €/each | Disp. Avail. | | |
|-----------|-------------------------|---------------|--------------|---|--|
| 3000432 * | 25 | 17,34 | M | - | |
| 3000433 □ | 27 | 25,14 | M | - | |
| 3000434 * | 27 | 22,16 | M | - | |
| 3000435 □ | 35 | 22,16 | M | - | |
| 3000436 □ | 50 | 26,82 | M | - | |

tubi consigliati
recommended hose

Mandrino: Niagara
Mandrel hose

Raccordo maschio con portagomma

GHISA

Male insert
CAST IRON



| | | | | | |
|---------|----|-------|---|---|--|
| 3000437 | 25 | 7,06 | M | - | |
| 3000438 | 27 | 10,22 | M | - | |
| 3000439 | 35 | 14,50 | M | - | |
| 3000440 | 50 | 15,74 | M | - | |

Attacco femmina filettato femmina BSP

GHISA

Female fitting female BSP thread
CAST IRON



| | | | | | |
|-----------|-----------|-------|---|---|--|
| 3000441 * | 25x1" | 15,38 | M | - | |
| 3000442 □ | 27x1" | 19,54 | M | - | |
| 3000443 * | 27x1" | 18,36 | M | - | |
| 3000444 □ | 35x1" | 21,74 | M | - | |
| 3000445 □ | 35x1 1/4" | 21,64 | M | - | |
| 3000446 □ | 50x2" | 25,48 | M | - | |

Attacco maschio filettato femmina BSP

GHISA

Male fitting female BSP thread
CAST IRON



| | | | | | |
|---------|-----------|-------|---|---|--|
| 3000447 | 25x1" | 8,70 | M | - | |
| 3000448 | 27x1" | 10,08 | M | - | |
| 3000449 | 35x1" | 11,72 | M | - | |
| 3000450 | 35x1 1/4" | 13,24 | M | - | |
| 3000451 | 35x1 1/2" | 15,74 | M | - | |
| 3000452 | 50x2" | 14,98 | M | - | |
| 3000453 | 50x2 1/2" | 27,00 | M | - | |

Riduzione maschio

GHISA

Male reducer
CAST IRON



| | | | | | |
|---------|-------|-------|---|---|--|
| 3000454 | 35x25 | 14,24 | M | - | |
| 3000455 | 50x35 | 19,66 | M | - | |

Guarnizione in gomma

Rubber gasket



| | | | | | |
|---------|----|------|---|---|--|
| 3000456 | 25 | 1,00 | M | - | |
| 3000457 | 27 | 1,00 | M | - | |
| 3000458 | 35 | 1,00 | M | - | |
| 3000459 | 50 | 1,22 | M | - | |

Maniglia

GHISA

Handles
CAST IRON



| | | | | | |
|---------|---|------|---|----|--|
| 3000671 | - | 3,80 | M | 10 | |
|---------|---|------|---|----|--|

simbologia listino price list symbol

Disp.: disponibilità

Avail.: availability

M: magazzino warehouse

R: richiesto request

quantità minima minimum quantity





raccordi con flange per tubi Volga Fra

couplings with flanges for volga fra hoses

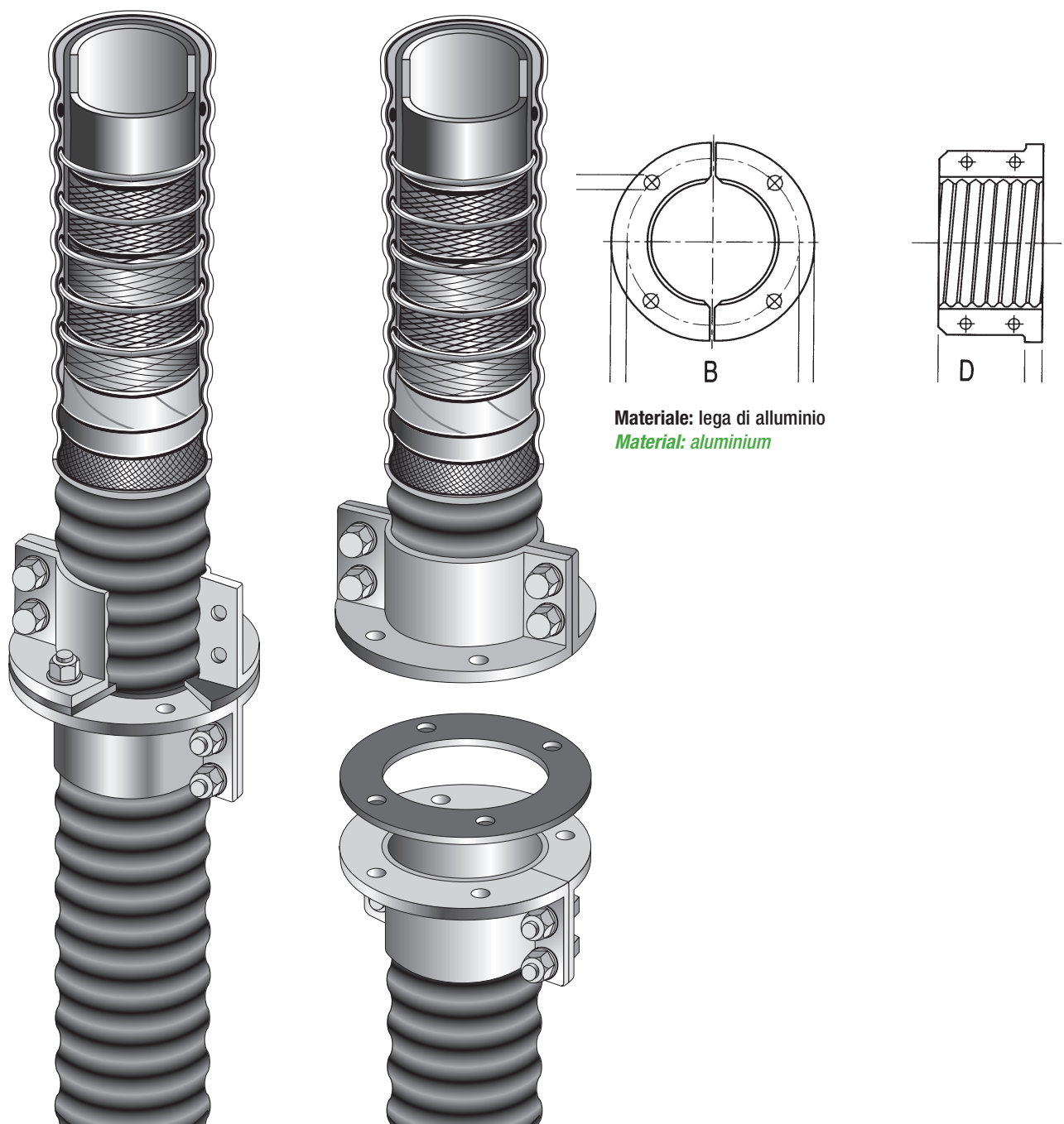
Si tratta di un sistema di raccordatura realizzato con l'applicazione, sopra la copertura del tubo Volga Fra, di due semigusci flangiati in alluminio. Lo speciale profilo dei raccordi permette, con un rapido e sicuro montaggio, di ottenere le pezzature di impiego in corso d'opera, offrendo un'estrema flessibilità di applicazione. Tali raccordi sono disponibili con flange tipo UNI 2277 PN 10 - DIN 2576, munite di guarnizioni piane, per prodotti secchi, o a labbro, per prodotti liquidi.

Per ulteriori informazioni vedi catalogo ABR VOLGA Fra System.

This fitting system is applied to the cover of the Volga Fra hose with two semi flange shells in aluminium. The special profile of the fitting allows for a rapid and efficient assembly system easily done on site and in the required lengths.

The couplings with flanges for Volga Fra hoses are available with dimensions according to UNI 2277 PN 10-DIN 2576, with NR rubber gasket, for conveying dry products, or with L gaskets, to be used for conveying liquid products.

For further information please refer to our ABR VOLGA Fra System.



Materiale: lega di alluminio
Material: aluminium



carburanti fuel DIN 2817

Raccordo filettato
maschio BSP

OTTONE

Male BSP
thread

BRASS



| Cod. Code | Ø nominale nominal Ø mm | inch | €/cad. €/each | Disp. Avail. | | |
|-----------|-------------------------|-------|---------------|--------------|---|--|
| 3000568 | 25 | 1 | 9,64 | M | - | |
| 3000569 | 32 | 1-1/4 | 12,50 | M | - | |
| 3000570 | 38 | 1-1/2 | 15,20 | M | - | |
| 3000571 | 50 | 2 | 22,46 | M | - | |
| 3000572 | 63,5 | 2-1/2 | 31,90 | M | - | |
| 3000573 | 75 | 3 | 35,42 | M | - | |
| 3000574 | 100 | 4 | 68,68 | M | - | |

Raccordo filettato
maschio BSP

INOX

Male BSP
thread

STAINLESS STEEL



| | | | | | | |
|---------|------|-------|-------|---|---|--|
| 3000575 | 25 | 1 | 30,00 | M | - | |
| 3000576 | 32 | 1-1/4 | 31,74 | M | - | |
| 3000577 | 38 | 1-1/2 | 33,06 | M | - | |
| 3000578 | 50 | 2 | 45,90 | M | - | |
| 2201500 | 63,5 | 2-1/2 | 76,92 | M | - | |
| 3000580 | 75 | 3 | 88,86 | M | - | |

Raccordo filettato
femmina BSP

OTTONE

Female BSP
thread

BRASS



| | | | | | | |
|---------|------|-------|--------|---|---|--|
| 3000582 | 25 | 1 | 8,60 | M | - | |
| 3000583 | 32 | 1-1/4 | 11,76 | M | - | |
| 3000584 | 38 | 1-1/2 | 12,48 | M | - | |
| 3000585 | 50 | 2 | 25,72 | M | - | |
| 3000586 | 63,5 | 2-1/2 | 45,32 | M | - | |
| 3000587 | 75 | 3 | 50,36 | M | - | |
| 3000588 | 100 | 4 | 337,20 | M | - | |

Raccordo filettato
femmina BSP

INOX

Female BSP
thread

STAINLESS STEEL



| | | | | | | |
|---------|------|-------|-------|---|---|--|
| 3000589 | 25 | 1 | 15,32 | M | - | |
| 3000590 | 32 | 1-1/4 | 19,24 | M | - | |
| 3000591 | 38 | 1-1/2 | 30,12 | M | - | |
| 3000592 | 50 | 2 | 34,44 | M | - | |
| 3000593 | 63,5 | 2-1/2 | 61,32 | M | - | |
| 3000594 | 75 | 3 | 78,48 | M | - | |

Semigusci per
raccordi

ALLUMINIO

Safety clamps
for fitting type

ALUMINIUM



| | | | | | |
|---------|--------|-------|---|---|--|
| 3000596 | 19x6 | 13,06 | M | - | |
| 3000597 | 25x6 | 13,18 | M | - | |
| 3000598 | 32x6 | 13,32 | M | - | |
| 3000599 | 38x6,5 | 13,40 | M | - | |
| 3000600 | 50x8 | 14,12 | M | - | |
| 3000601 | 63x8 | 17,40 | M | - | |
| 3000602 | 75x8 | 18,08 | M | - | |
| 3000603 | 75x10 | 38,64 | M | - | |
| 3000604 | 100x8 | 44,80 | M | - | |

Semigusci per
raccordi

OTTONE

Safety clamps
for fitting type

BRASS



| | | | | | |
|---------|--------|--------|---|---|--|
| 3000606 | 19x6 | 20,46 | M | - | |
| 3000607 | 25x6 | 21,90 | M | - | |
| 3000608 | 32x6 | 27,44 | M | - | |
| 3000609 | 38x6,5 | 28,26 | M | - | |
| 3000610 | 50x8 | 54,80 | M | - | |
| 3000611 | 63x8 | 63,54 | M | - | |
| 3000612 | 75x8 | 69,68 | M | - | |
| 3000613 | 75x10 | 92,40 | M | - | |
| 3000614 | 100x8 | 139,18 | R | 5 | |

Semigusci per
raccordi

INOX

Safety clamps
for fitting type

STAINLESS STEEL



| | | | | | |
|---------|--------|--------|---|---|--|
| 3000616 | 19x6 | 40,48 | M | - | |
| 3000617 | 25x6 | 43,04 | M | - | |
| 3000618 | 32x6 | 46,72 | M | - | |
| 3000619 | 38x6,5 | 50,08 | M | - | |
| 3000620 | 50x8 | 72,72 | M | - | |
| 3000918 | 63x8 | 103,12 | M | - | |
| 3000621 | 75x8 | 107,12 | M | - | |
| 3000623 | 100x8 | 176,86 | R | 5 | |

tubi consigliati
recommended hose

Mandrino: Avio Global C/E
Mandrel hose Australia
Genova
Puerto Rico
Toronto
Ankara
Supertop
Orlando
Everest
Caracas

Per il corretto abbinamento tra tubo, materiale raccordo e fluido veicolato contattare IVG Colbachini

For the correct combination of hose, fitting material and conveyed fluid contact IVG Colbachini

simbologia listino price list symbol

Disp.: disponibilità

Avail.: availability

M: magazzino warehouse

R: richiesto request

quantità minima minimum quantity





carburanti TW fuel - TW

Raccordo maschio
tipo WK filettato
femmina BSP

Male fitting
type WK
female BSP
thread



OTTONE
BRASS

INOX
STAINLESS
STEEL

| Cod. Code | Ø nominale nominal Ø | | €/cad. €/each | Disp. Avail. | R | - |
|--------------|-------------------------|------|------------------|-----------------|---|---|
| | mm | inch | | | | |
| 3000505 | 50 | 2 | 26,20 | R | - | - |
| 3000506 | 80 | 3 | 48,38 | R | - | - |
| 3000507 | 100 | 4 | 96,34 | R | - | - |
| 3000508 | 50 | 2 | 15,60 | R | - | - |
| 3000509 | 80 | 3 | 31,30 | R | - | - |

Raccordo femmina
tipo MK filettato
femmina
BSP

Female
fitting type
MK female
BSP thread



OTTONE
BRASS

INOX
STAINLESS
STEEL

| | | | | | | |
|---------|-----|---|--------|---|---|---|
| 3000511 | 50 | 2 | 90,36 | R | - | - |
| 3000512 | 80 | 3 | 126,68 | R | - | - |
| 3000513 | 100 | 4 | 294,64 | R | - | - |
| 3000514 | 50 | 2 | 34,70 | R | - | - |
| 3000515 | 80 | 3 | 69,64 | R | - | - |

Tappo - MB

Cap - MB



ALLUMINIO
ALUMINIUM

OTTONE
BRASS

INOX
STAINLESS
STEEL

| | | | | | | |
|---------|-----|---|-------|---|---|---|
| 3000531 | 50 | 2 | 28,76 | R | - | - |
| 3000532 | 80 | 3 | 45,52 | R | - | - |
| 3000533 | 100 | 4 | 93,46 | R | - | - |
| 3000534 | 50 | 2 | 41,50 | R | - | - |
| 3000535 | 80 | 3 | 74,32 | R | - | - |
| 3000536 | 50 | 2 | 18,64 | R | - | - |
| 3000537 | 80 | 3 | 35,48 | R | - | - |

Guarnizione piana per
tappo - MB

Gasket
for cap
MB



BUNA
BUNA

HYPALON®
HYPALON®

PTFE
PTFE

VITON®
VITON®

| | | | | | | |
|---------|----|---|-------|---|----|---|
| 3000538 | 50 | 2 | 2,46 | R | 10 | - |
| 3000539 | 80 | 3 | 4,08 | R | 10 | - |
| 3000541 | 50 | 2 | 2,76 | R | 10 | - |
| 3000542 | 80 | 3 | 4,32 | R | 10 | - |
| 3000544 | 50 | 2 | 6,06 | R | 10 | - |
| 3000545 | 80 | 3 | 9,12 | R | 10 | - |
| 3000547 | 50 | 2 | 11,20 | R | 5 | - |
| 3000548 | 80 | 3 | 17,26 | R | 5 | - |

Guarnizione piana per
raccordo femmina tipo
MK filettato
femmina BSP

Gasket for
female
fitting type
MK female
BSP thread



BUNA
BUNA

HYPALON®
HYPALON®

VITON®
VITON®

| | | | | | | |
|---------|----|---|-------|---|----|---|
| 3000516 | 50 | 2 | 3,28 | R | 10 | - |
| 3000517 | 80 | 3 | 3,60 | R | 10 | - |
| 3000519 | 50 | 2 | 2,76 | R | 10 | - |
| 3000520 | 80 | 3 | 4,32 | R | 10 | - |
| 3000522 | 50 | 2 | 26,32 | R | 5 | - |
| 3000523 | 80 | 3 | 27,66 | R | 5 | - |

Guarnizione a labbro
per raccordo femmina tipo MK
filettato femmina BSP

"L" gasket
for female
coupling
type MK
female
BSP thread



PTFE
PTFE

VULKOLLAN®
VULKOLLAN®

| | | | | | | |
|---------|----|---|------|---|----|---|
| 3000525 | 50 | 2 | 1,44 | R | 10 | - |
| 3000526 | 80 | 3 | 1,78 | R | 10 | - |
| 3000528 | 50 | 2 | 2,98 | R | 10 | - |
| 3000529 | 80 | 3 | 4,20 | R | 10 | - |

tubi consigliati recommended hose

Mandrino:
Mandrel hose

- Avio Global C/E
- Australia
- Genova
- Puertorico
- Toronto
- Ankara
- Supertop
- Orlando
- Everest
- Caracas

Per il corretto abbinamento tra tubo, materiale raccordo e fluido veicolato contattare IVG Colbachini

For the correct combination of hose, fitting material and conveyed fluid contact IVG Colbachini

I raccordi TW sono prevalentemente da abbinare al portagomma DIN 2817.

TW fittings are generally combined with DIN 2817 insert.



Raccordo filettato femmina NPT

ACCIAIO
CARBONIO

Female fitting NPT thread

CARBON STEEL



| Cod. Code | Ø nominale nominal Ø | | €/cad. €/each | Disp. Avail. | M | - |
|-----------|----------------------|-------|---------------|--------------|---|---|
| | mm | inch | | | | |
| 3000484 | 13 | 1/2 | 19,56 | M | - | |
| 3000485 | 19 | 3/4 | 27,74 | M | - | |
| 3000486 | 25 | 1 | 28,44 | M | - | |
| 3000487 | 32 | 1-1/4 | 47,12 | M | - | |
| 3000488 | 38 | 1-1/2 | 47,40 | M | - | |
| 3000489 | 51 | 2 | 56,06 | M | - | |

tubi consigliati
recommended hose

Mandrino: Manitoba
Mandrel hose Victoria
Vapofer

Raccordo filettato maschio NPT

ACCIAIO
CARBONIO

Male fitting NPT thread

CARBON STEEL



| | | | | | | |
|---------|----|-------|-------|---|---|--|
| 3000490 | 13 | 1/2 | 4,18 | M | - | |
| 3000491 | 19 | 3/4 | 7,08 | M | - | |
| 3000492 | 25 | 1 | 11,20 | M | - | |
| 3000493 | 32 | 1-1/4 | 14,16 | M | - | |
| 3000494 | 38 | 1-1/2 | 14,46 | M | - | |
| 3000495 | 51 | 2 | 21,54 | M | - | |

Morsetti

GHISA
STAMPATA

Clamps

PRESSED IRON



| Cod. | Ø nominale nominal Ø | | range mm range mm | | €/cad. €/each | Disp. Avail. | M | - |
|---------|----------------------|-------|-------------------|-----|---------------|--------------|---|---|
| | mm | inch | min | max | | | | |
| | | | | | | | | |
| 3000497 | 19 | 3/4 | 30 | 33 | 10,98 | M | - | |
| 3000498 | 25 | 1 | 35,5 | 40 | 14,96 | M | - | |
| 3000499 | 32 | 1-1/4 | 45,5 | 53 | 36,40 | M | - | |
| 3000500 | 38 | 1-1/2 | 51 | 56 | 35,42 | M | - | |
| 3000501 | 51 | 2 | 63,5 | 70 | 41,24 | M | - | |
| 3000502 | 63 | 2-1/2 | 78 | 89 | 56,48 | M | - | |
| 3000503 | 75 | 3 | 89 | 95 | 88,12 | M | - | |
| 3000504 | 100 | 4 | 117,5 | 127 | 268,24 | M | - | |



raccordi couplings DIN 11851

Raccordo
maschio

INOX
316

Male fitting

STAINLESS STEEL
316



| Cod. Code | Ø nominale nominal Ø | | €/cad. €/each | Disp. Avail. | |
|--------------|-------------------------|----------------------|------------------|-----------------|---|
| | DN | DN portagomma/insert | | | |
| 3000952 | 25 | 28 | 53,22 | R | 5 |
| 3000953 | 32 | 34 | 55,06 | R | 5 |
| 3000954 | 40 | 40 | 56,14 | R | 5 |
| 3000955 | 50 | 52 | 63,36 | R | 5 |
| 3000956 | 65 | 70 | 76,20 | R | 5 |
| 3000957 | 80 | 80 | 111,80 | R | 5 |
| 3000958 | 100 | 101,6 | 153,84 | R | 5 |

tubi consigliati
recommended hose

Mandrino:
Mandrel hose

Panama
Acapulco
Scotland
Scotland/LL
Merlot
Parry
Milk Service
Super Juice

Raccordo
femmina

INOX
316

Female fitting

STAINLESS STEEL
316



| | DN | DN portagomma/insert | | | |
|---------|-----|----------------------|--------|---|---|
| 3000959 | 25 | 28 | 58,32 | R | 5 |
| 3000960 | 32 | 34 | 60,88 | R | 5 |
| 3000961 | 40 | 40 | 62,50 | R | 5 |
| 3000962 | 50 | 52 | 70,96 | R | 5 |
| 3000963 | 65 | 70 | 90,66 | R | 5 |
| 3000964 | 80 | 80 | 131,12 | R | 5 |
| 3000965 | 100 | 101,6 | 172,90 | R | 5 |

Girella

INOX
304

Round nut

STAINLESS
STEEL
304



| | | | | |
|---------|-----|-------|---|---|
| 4702525 | 25 | 12,26 | R | 5 |
| 4703225 | 32 | 13,04 | R | 5 |
| 4703825 | 40 | 12,42 | R | 5 |
| 4705125 | 50 | 14,56 | R | 5 |
| 4707025 | 65 | 21,12 | R | 5 |
| 4708025 | 80 | 31,54 | R | 5 |
| 4710025 | 100 | 50,14 | R | 5 |

Guarnizione
in gomma

Rubber
gasket



| | | | | |
|---------|-----|------|---|----|
| 3001002 | 25 | 0,32 | R | 50 |
| 3001003 | 32 | 0,38 | R | 50 |
| 3001008 | 40 | 0,40 | R | 50 |
| 3001004 | 50 | 0,48 | R | 50 |
| 3001005 | 65 | 0,70 | R | 50 |
| 3001006 | 80 | 0,76 | R | 50 |
| 3001007 | 100 | 1,24 | R | 50 |

simbologia listino *price list symbol*

Disp.: disponibilità

Avail.: *availability*

M: magazzino *warehouse*

R: richiesto *request*

quantità minima *minimum quantity*



raccordi couplings CLAMP

Semiraccordo

INOX
316

Coupling
STAINLESS
STEEL
316



| Cod. Code | Ø nominale nominal Ø | | €/cad. €/each | Disp. Avail. | |
|-----------|----------------------|---------|---------------|--------------|---|
| | portagomma insert | | | | |
| | mm | DN inch | | | |
| 3000972 | 25,4 | 1 | 59,24 | R | 5 |
| 3000973 | 38,1 | 1-1/2 | 59,24 | R | 5 |
| 3000974 | 50,8 | 2 | 78,60 | R | 5 |
| 3000975 | 63,5 | 2-1/2 | 113,62 | R | 5 |
| 3000976 | 76,1 | 3 | 153,12 | R | 5 |
| 3000977 | 101,6 | 4 | 256,74 | R | 5 |

tubi consigliati recommended hose

Mandrino: Acapulco
Mandrel hose Scotland
Scotland/LL
Merlot
Parry
Milk Service
Super Juice
Supertop
Supertop/LL

Morsetto

INOX
304

Clamp
STAINLESS
STEEL
304



morsetto per raccordo
clamp for fitting

| | mm DN inch | | | | |
|---------|------------|-------|-------|---|---|
| 3000990 | 25,4 | 1 | 22,76 | R | 5 |
| 3000991 | 38,1 | 1-1/2 | 22,76 | R | 5 |
| 3000992 | 50,8 | 2 | 24,84 | R | 5 |
| 3000993 | 63,5 | 2-1/2 | 30,22 | R | 5 |
| 3000994 | 76,1 | 3 | 35,18 | R | 5 |
| 3000995 | 101,6 | 4 | 41,32 | R | 5 |

Guarnizione
in silicone

*Silicon
gasket*



guarnizione per raccordo
gasket for fitting

| | mm DN inch | | | | |
|---------|------------|-------|------|---|----|
| 3000996 | 25,4 | 1 | 2,44 | R | 10 |
| 3000997 | 38,1 | 1-1/2 | 2,56 | R | 10 |
| 3000998 | 50,8 | 2 | 2,76 | R | 10 |
| 3000999 | 63,5 | 2-1/2 | 3,34 | R | 10 |
| 3001000 | 76,1 | 3 | 5,50 | R | 10 |
| 3001001 | 101,6 | 4 | 6,26 | R | 10 |



raccordi couplings GAROLLA

Semiraccordo

INOX
304

Coupling

STAINLESS STEEL
304

| Cod. Code | Ø nominale nominal Ø mm | €/cad. €/each | Disp. Avail. | | |
|-----------|-------------------------|---------------|--------------|---|--|
| 3000966 | 40 | 14,04 | R | 5 | |
| 3000967 | 50 | 15,50 | R | 5 | |
| 3000968 | 60 | 17,82 | R | 5 | |
| 3000969 | 70 | 22,90 | R | 5 | |
| 3000970 | 80 | 27,64 | R | 5 | |
| 3000971 | 100 | 34,84 | R | 5 | |

tubi consigliati
recommended hose

Mandrino: Merlot
Mandrel hose Parry

Morsetto

INOX
304

Clamp

STAINLESS STEEL
304

morsetto per raccordo
clamp for fitting

DN

| | | | | |
|---------|-----|-------|---|---|
| 3000978 | 40 | 12,78 | R | 5 |
| 3000979 | 50 | 13,20 | R | 5 |
| 3000980 | 60 | 14,04 | R | 5 |
| 3000981 | 70 | 15,44 | R | 5 |
| 3000982 | 80 | 15,52 | R | 5 |
| 3000983 | 100 | 22,74 | R | 5 |

Guarnizione
in gommaRubber
gasket

guarnizione per raccordo
gasket for fitting

DN

| | | | | |
|---------|-----|------|---|----|
| 3000984 | 40 | 1,68 | R | 10 |
| 3000985 | 50 | 1,86 | R | 10 |
| 3000986 | 60 | 1,94 | R | 10 |
| 3000987 | 70 | 2,08 | R | 10 |
| 3000988 | 80 | 2,18 | R | 10 |
| 3000989 | 100 | 2,88 | R | 10 |

simbologia listino price list symbol

Disp.: disponibilità

Avail.: availability


M: magazzino warehouse

R: richiesto request

quantità minima minimum quantity

Clamps with bolt

collari
a doppio bullone
AK/BI Blokclamps with
double bolt
AK/BI BlokACCIAIO
TROPICALIZZATOTROPICALIZED
STEEL


| Cod. Code | Ø nominale nominal Ø mm | €/cad. €/each | Disp. Avail. |  |
|-----------|-------------------------|---------------|--------------|---|
| 3000891 | 74-79 | 7,18 | R | 50 |
| 3000892 | 80-85 | 7,26 | R | 50 |
| 3000893 | 86-91 | 7,42 | R | 50 |
| 3000894 | 92-97 | 7,44 | R | 50 |
| 3000895 | 98-103 | 7,60 | R | 50 |
| 3000896 | 104-112 | 7,64 | R | 50 |
| 3000897 | 113-121 | 7,74 | R | 50 |
| 3000898 | 122-130 | 7,82 | R | 50 |
| 3000899 | 131-139 | 7,94 | R | 50 |
| 3000900 | 140-148 | 7,98 | R | 50 |
| 3000901 | 149-161 | 8,04 | R | 50 |
| 3000902 | 162-174 | 8,64 | R | 50 |
| 3000903 | 175-187 | 8,90 | R | 50 |
| 3000904 | 188-200 | 9,12 | R | 50 |
| 3000905 | 200-220 | 9,30 | R | 50 |
| 3000906 | 220-240 | 10,12 | R | 50 |
| 3000907 | 240-260 | 10,20 | R | 50 |
| 3000908 | 260-280 | 10,54 | R | 10 |
| 3000909 | 280-300 | 11,34 | R | 10 |
| 3000910 | 300-325 | 15,00 | R | 10 |
| 3000911 | 325-350 | 16,06 | R | 10 |
| 3000912 | 350-375 | 17,32 | R | 10 |
| 3000913 | 375-400 | 18,66 | R | 10 |
| 3000914 | 400-425 | 21,08 | R | 10 |
| 3000915 | 425-450 | 22,44 | R | 10 |
| 3000916 | 450-475 | 25,56 | R | 10 |
| 3000917 | 475-500 | 29,64 | R | 10 |

collari
a bullone AK/PCclamps with bolt
AK/PCINOX
304STAINLESS
STEEL
304

| | | | | |
|---------|---------|-------|---|-----|
| 3000859 | 23-25 | 3,08 | R | 100 |
| 3000860 | 26-28 | 3,08 | R | 100 |
| 3000861 | 29-31 | 3,08 | R | 100 |
| 3000862 | 32-35 | 3,08 | R | 100 |
| 3000863 | 36-39 | 5,10 | R | 100 |
| 3000864 | 40-43 | 5,12 | R | 100 |
| 3000865 | 44-47 | 5,18 | R | 100 |
| 3000866 | 48-51 | 5,20 | R | 100 |
| 3000867 | 52-55 | 5,24 | R | 100 |
| 3000868 | 56-59 | 5,32 | R | 100 |
| 3000869 | 60-63 | 5,38 | R | 100 |
| 3000870 | 64-67 | 5,40 | R | 100 |
| 3000871 | 68-73 | 5,44 | R | 100 |
| 3000872 | 74-79 | 5,48 | R | 50 |
| 3000873 | 80-85 | 5,54 | R | 50 |
| 3000874 | 86-91 | 5,60 | R | 50 |
| 3000875 | 92-97 | 5,66 | R | 50 |
| 3000876 | 98-103 | 5,72 | R | 50 |
| 3000877 | 104-112 | 5,76 | R | 50 |
| 3000878 | 113-121 | 5,82 | R | 50 |
| 3000879 | 122-130 | 5,86 | R | 25 |
| 3000880 | 131-140 | 5,96 | R | 25 |
| 3000881 | 140-148 | 6,04 | R | 25 |
| 3000882 | 149-161 | 6,14 | R | 25 |
| 3000883 | 162-174 | 6,16 | R | 25 |
| 3000884 | 175-187 | 6,28 | R | 15 |
| 3000885 | 188-200 | 6,38 | R | 15 |
| 3000886 | 201-213 | 10,16 | R | 15 |
| 3000887 | 214-227 | 10,16 | R | 10 |
| 3000888 | 227-239 | 10,94 | R | 10 |
| 3000889 | 240-252 | 10,94 | R | 10 |

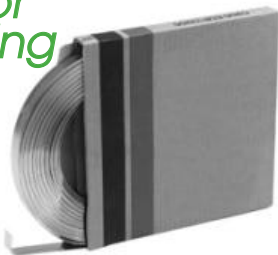
Band type

fascetta
tipo AK KCX 9mmband
type AK KCX 9 mmINOX
304INOX
304

| Cod. Code | Ø nominale nominal Ø mm | €/cad. €/each | Disp. Avail. |  |
|--------------|-------------------------------|------------------|-----------------|---|
| 3000811 | 16-25 | 1,00 | R | 100 |
| 3000813 | 20-32 | 1,06 | R | 100 |
| 3000814 | 25-40 | 1,10 | R | 100 |
| 3000816 | 32-50 | 1,14 | R | 100 |
| 3000817 | 40-60 | 1,24 | R | 100 |
| 3000818 | 50-70 | 1,26 | R | 100 |
| 3000819 | 60-80 | 1,32 | R | 50 |
| 3000820 | 70-90 | 1,38 | R | 50 |
| 3000821 | 80-100 | 1,46 | R | 50 |
| 3000822 | 90-110 | 1,52 | R | 50 |
| 3000823 | 100-120 | 1,56 | R | 50 |
| 3000824 | 110-130 | 1,68 | R | 50 |

nastro per serraggio

band for tightening



Cod. Code Largh. pollici Width inch €/cad. €/each Disp. Avail. 

| | | | | |
|---------|-----|-------|---|---|
| 3000637 | 1/4 | 37,80 | R | - |
| 3000638 | 3/8 | 45,68 | R | - |
| 3000639 | 1/2 | 64,64 | R | - |
| 3000640 | 5/8 | 79,84 | R | - |
| 3000641 | 3/4 | 95,52 | R | - |

utensile per serraggio

tightening tool



| | | | |
|---------|--------|---|---|
| 3000647 | 194,66 | R | - |
|---------|--------|---|---|

buckles per serraggio

buckles for tightening



| | | | | |
|---------|-----|-------|---|-----|
| 3000642 | 1/4 | 28,42 | R | 100 |
| 3000643 | 3/8 | 32,92 | R | 100 |
| 3000644 | 1/2 | 50,44 | R | 100 |
| 3000645 | 5/8 | 56,84 | R | 100 |
| 3000646 | 3/4 | 71,94 | R | 100 |

ogni confezione contiene 100 Pz
each package contains 100 Pz

simbologia listino *price list symbol*

Disp.: disponibilità

Avail.: *availability*

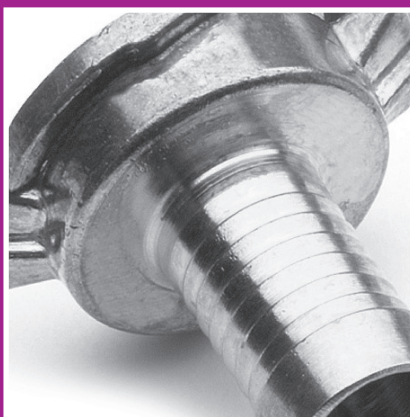
M: magazzino *warehouse*

R: richiesto *request*

 quantità minima *minimum quantity*



ivg colbachini spa



ООО «ТПК «Белтимпэкс»

г. Москва, ул. Красная Сосна, д. 3, оф. 202

Телефон: +7 (495) 221-0649

+7 (495) 411-9146

Факс: +7 (495) 648 6745

info@beltmarket.ru

www.beltmarket.ru